

## Visual examples of the Highway Safety Hazards present at the location of the Yew Tree Farm development, St Kenelem's Road, Romsley (19-00305-ful)

The following images are examples of the visual evidence was captured by the Parish Council and members of the community during two separate monitoring periods.

The **Batch 1** one photographs were captured between 4th November 2018 to 18th November 2018 with a break in the monitoring of 6 days between 11th and 16th due to the unavailability of a resident to look at the videos.

The **Batch 2** photographs were captured between 16th April 2019 and 3rd May 2019.

All the images have been taken from the same camera which is looking in a westerly direction and is located by the blue circle on the aerial image below. The proposed development runs the full length of the footway on the right-hand side of the images. The drop kerbs to permit driveways will also run along the full length of this footway.



Other than for the redaction of people's faces, vehicle registrations or distinctive vehicle markings to Comply with GDPR requirements, the images that have not been changed or augmented in any way.

The presented examples focus on vehicles driving on the pedestrian footway, with a number capturing direct conflicts between vehicles and pedestrians, including two incidents where the vehicles come into contact with a pedestrian and a cyclist. In total, 36 examples are provided.

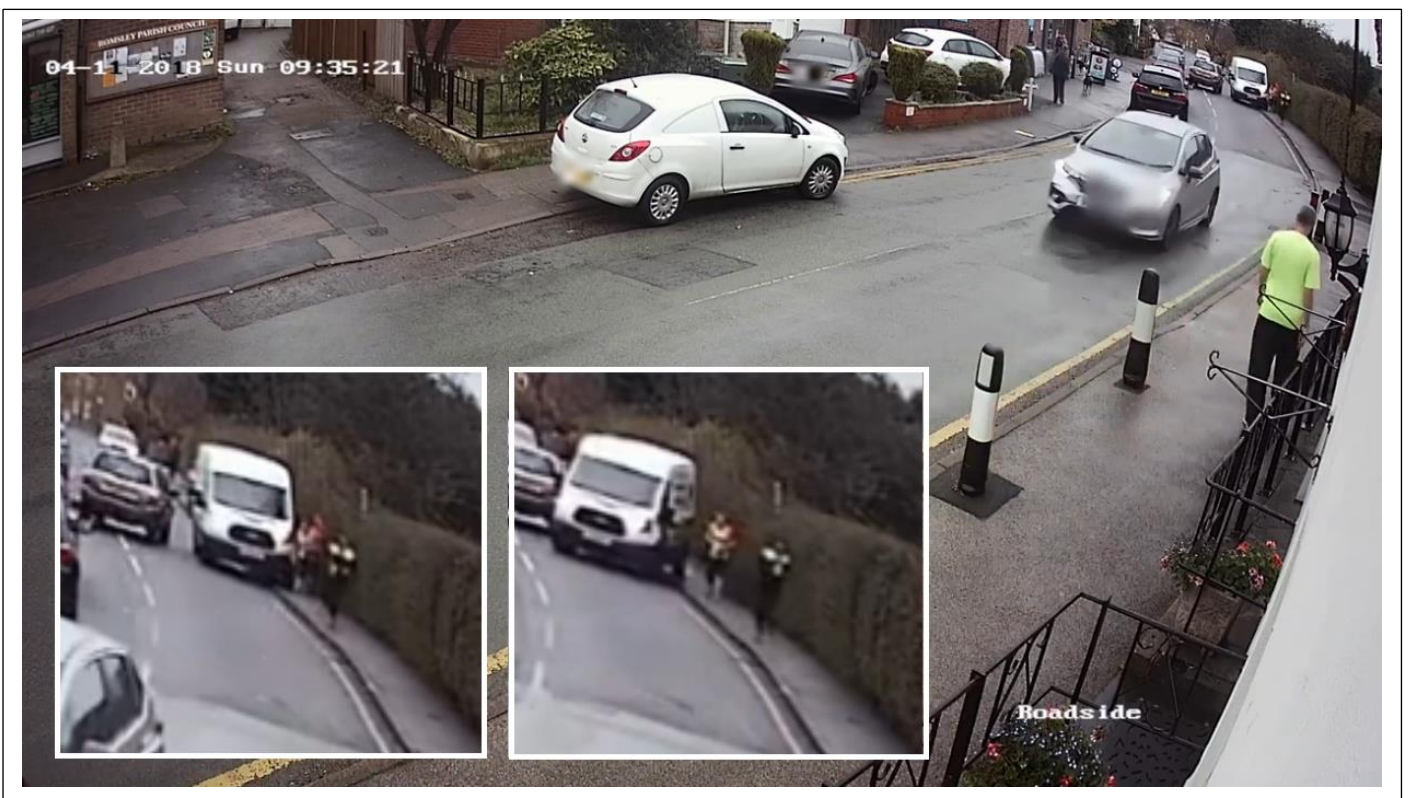
However, during these monitoring periods, many other examples of congestion and safety-related issues were captured.

The video of these can be seen at <https://youtu.be/CuRctbQ8nmU>, which provides a much greater contextual understanding of the problems.

**Batch 1 Friday 2nd November 2018** – Parish bus has to drive along the full length of the pedestrian footway to avoid congestion.



**Batch 1 Sunday 4th November 2018** – light goods vehicle driving along the footway collides with a number of pedestrians who were using the footway for running. The driver claimed not to have seen them because he was concentrating on oncoming traffic.

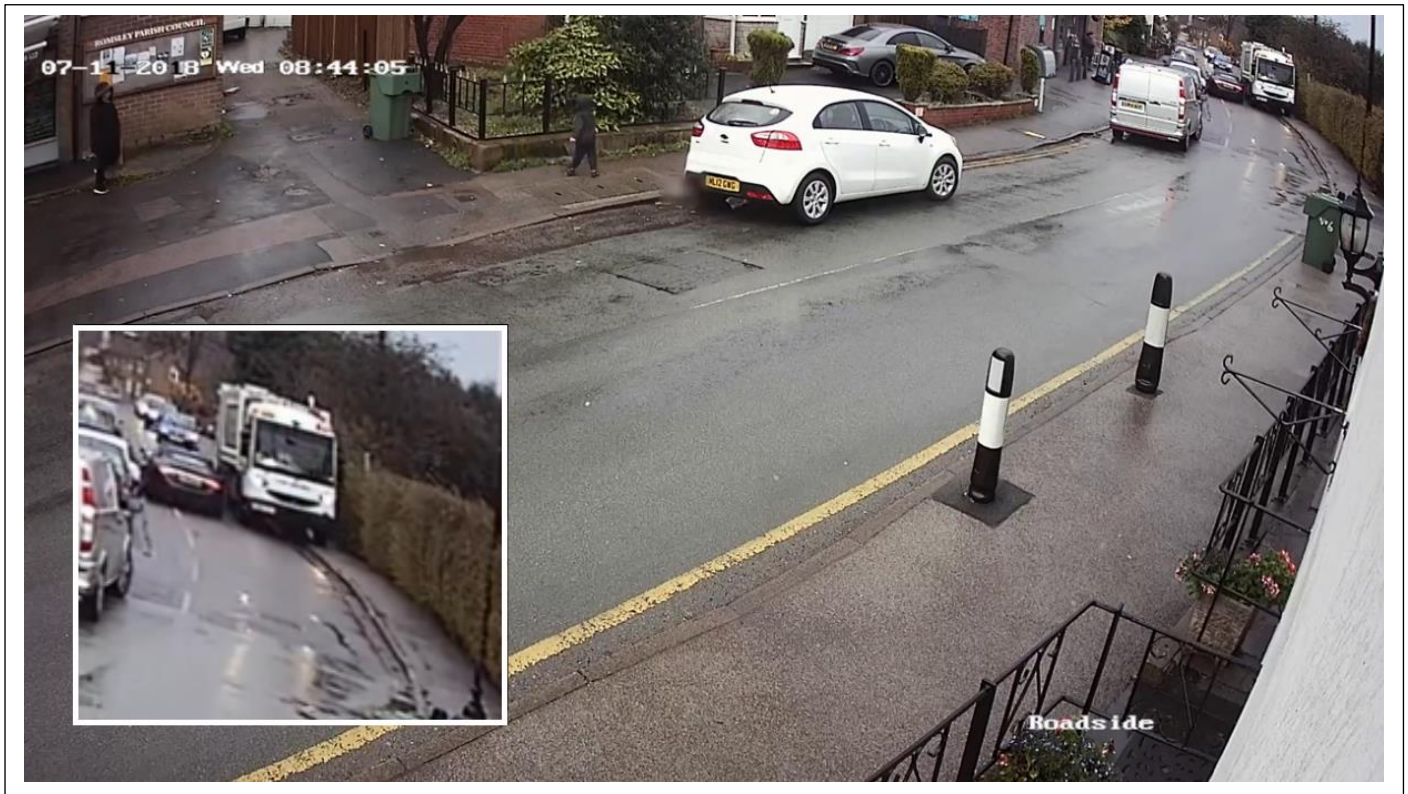


Romsley Parish Council operates an open communications policy and routine correspondence will be made available to its Residents unless it contains commercially sensitive, confidential or personal information and is marked accordingly.

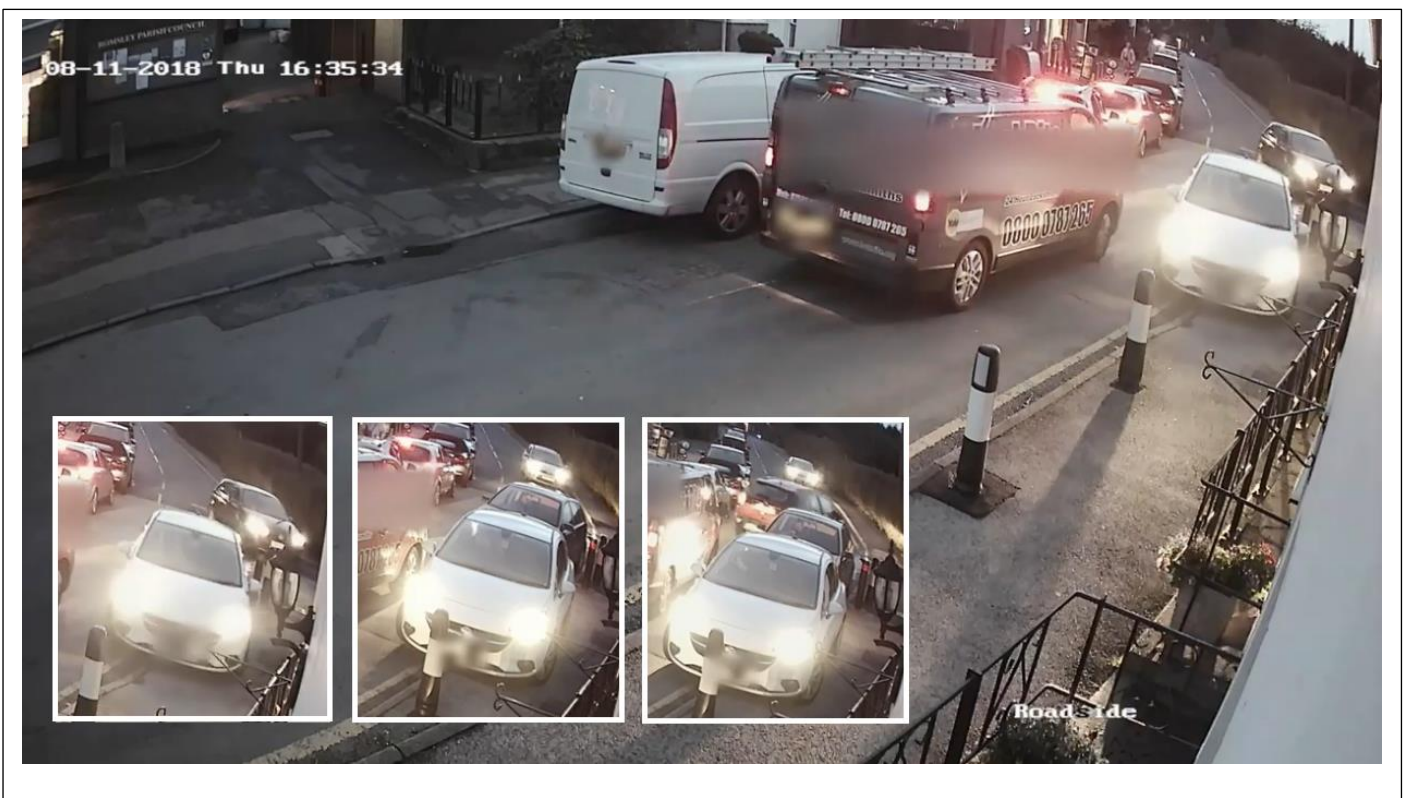
Please address all correspondence to Romsley Parish Council, 167 Bromsgrove Road, Hunnington, B62 0JU.  
E-mail [romsleyparish@btinternet.com](mailto:romsleyparish@btinternet.com) Telephone: 01562 712050



**Batch 1 Wednesday 7th November 2018** – Refuse collection vehicle drives along footway to avoid blocking road whilst collecting bins.



**Batch 1 Thursday 8th November 2018** – Multiple vehicles pull and drive along footway to avoid congestion.

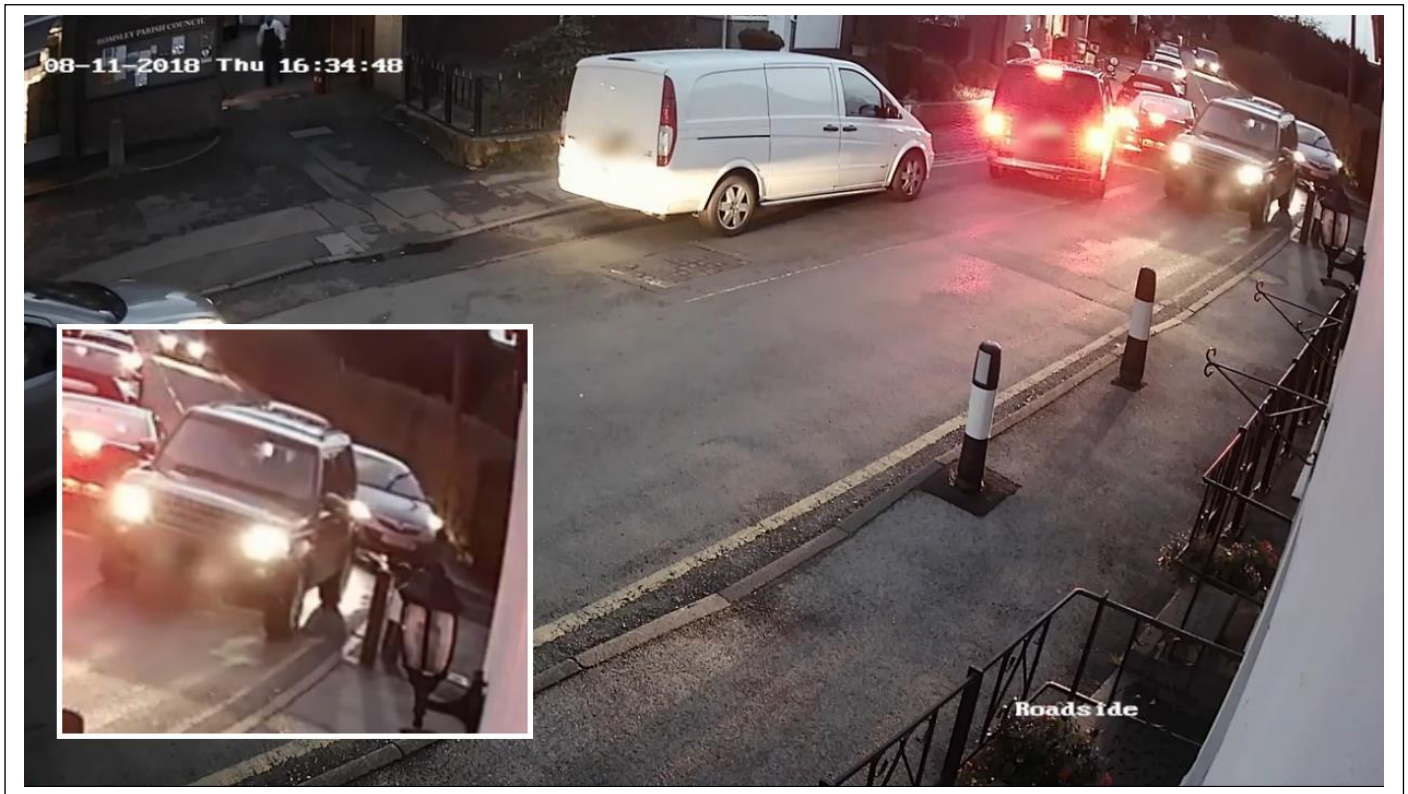


Romsley Parish Council operates an open communications policy and routine correspondence will be made available to its Residents unless it contains commercially sensitive, confidential or personal information and is marked accordingly.

Please address all correspondence to Romsley Parish Council, 167 Bromsgrove Road, Hunnington, B62 0JU.  
E-mail [romsleyparish@btinternet.com](mailto:romsleyparish@btinternet.com) Telephone: 01562 712050



**Batch 1 Thursday 8th November 2018** – Multiple vehicles pull and drive along footway to avoid congestion.



**Batch 1 Friday 9th November 2018** – Multiple cars and a Light Goods Vehicle (LGV) mount the kerb and drive along footway to avoid congestion.

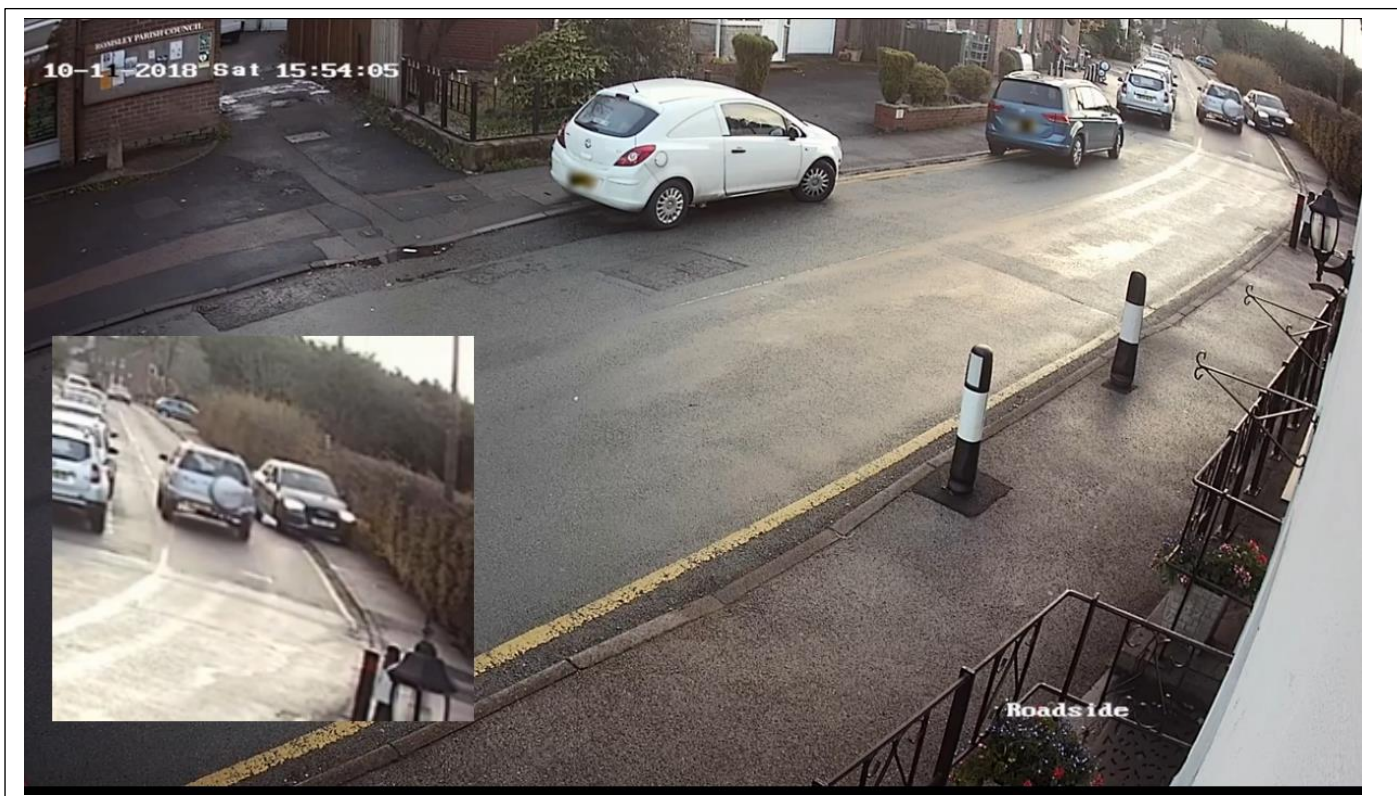




**Batch 1 Friday 9th November 2018** – Multiple cars and a Light Goods Vehicle (LGV) mount the kerb and drive along the footway. There is also a conflict between bus and pedestrian crossing the road.

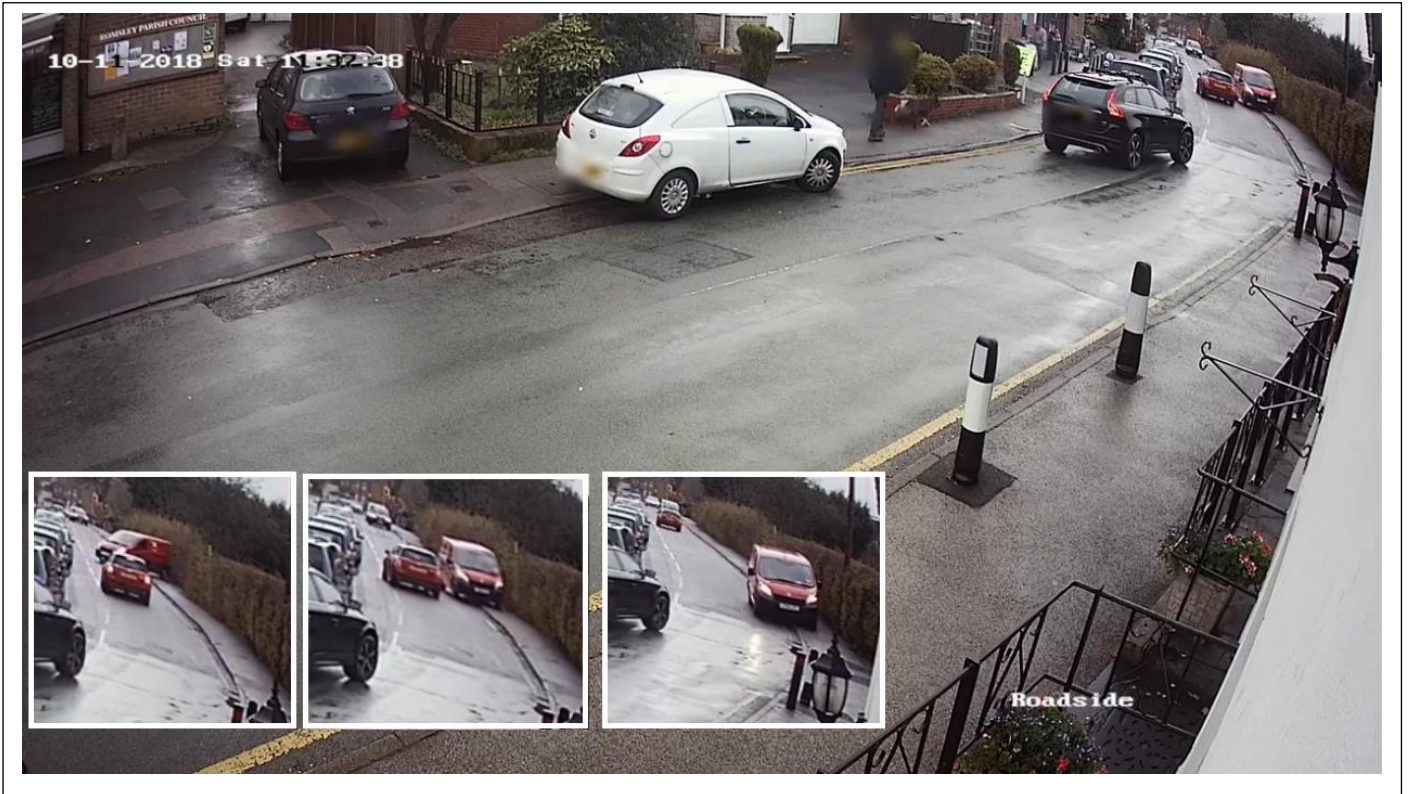


**Batch 1 Saturday 10th November 2018** – Vehicles drive along footway at speed.





**Batch 1 Saturday 10th November 2018** – Delivery vehicle attempts to turn around by mounting the footway and then drives along it.

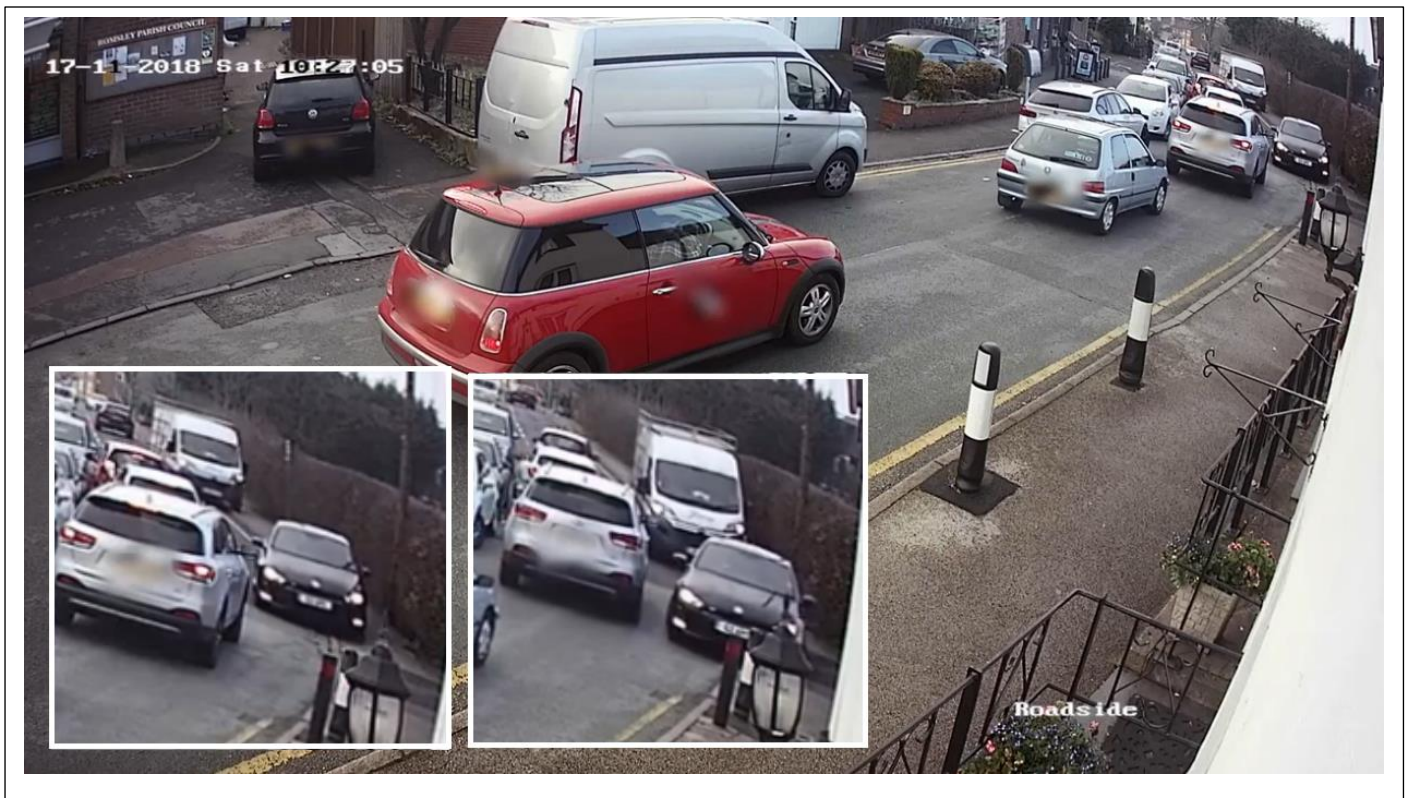


**Batch 1 Saturday 10th November 2018** – Vehicles drive along footway to pass another vehicle.

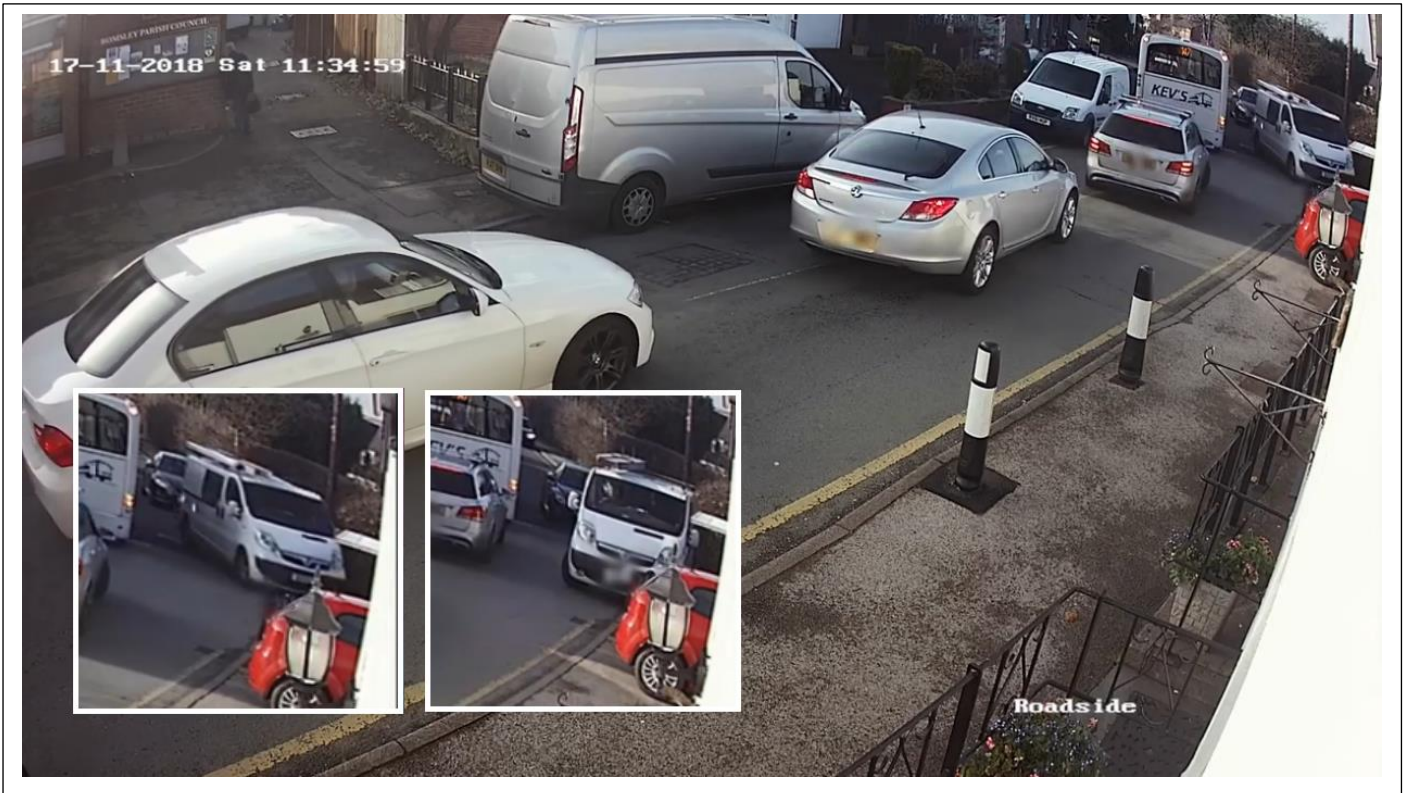




**Batch 1 Saturday 17th November 2018 – Multiple vehicles drive along footway to avoid congestion.**

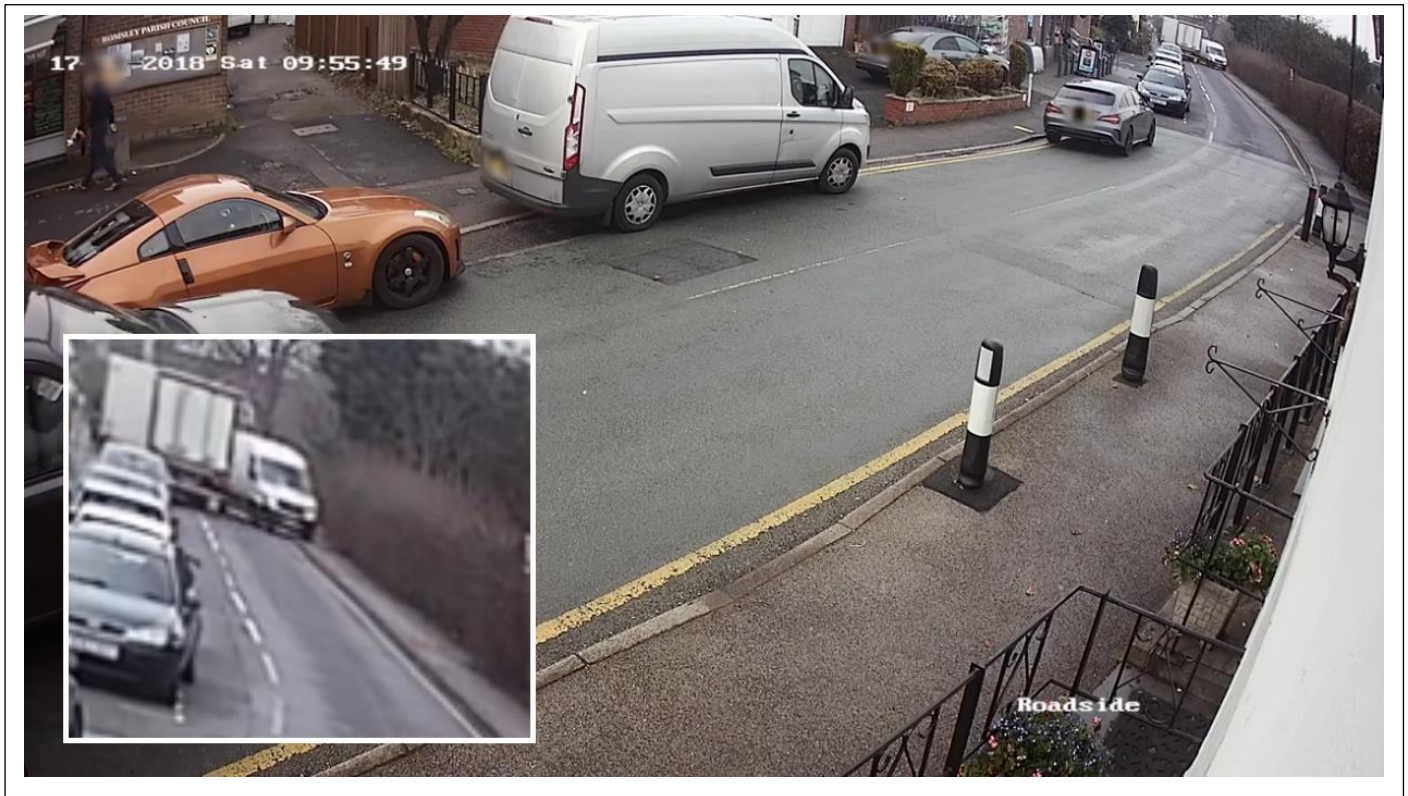


**Batch 1 Saturday 17th November 2018 – Multiple vehicles drive along footway to avoid congestion.**

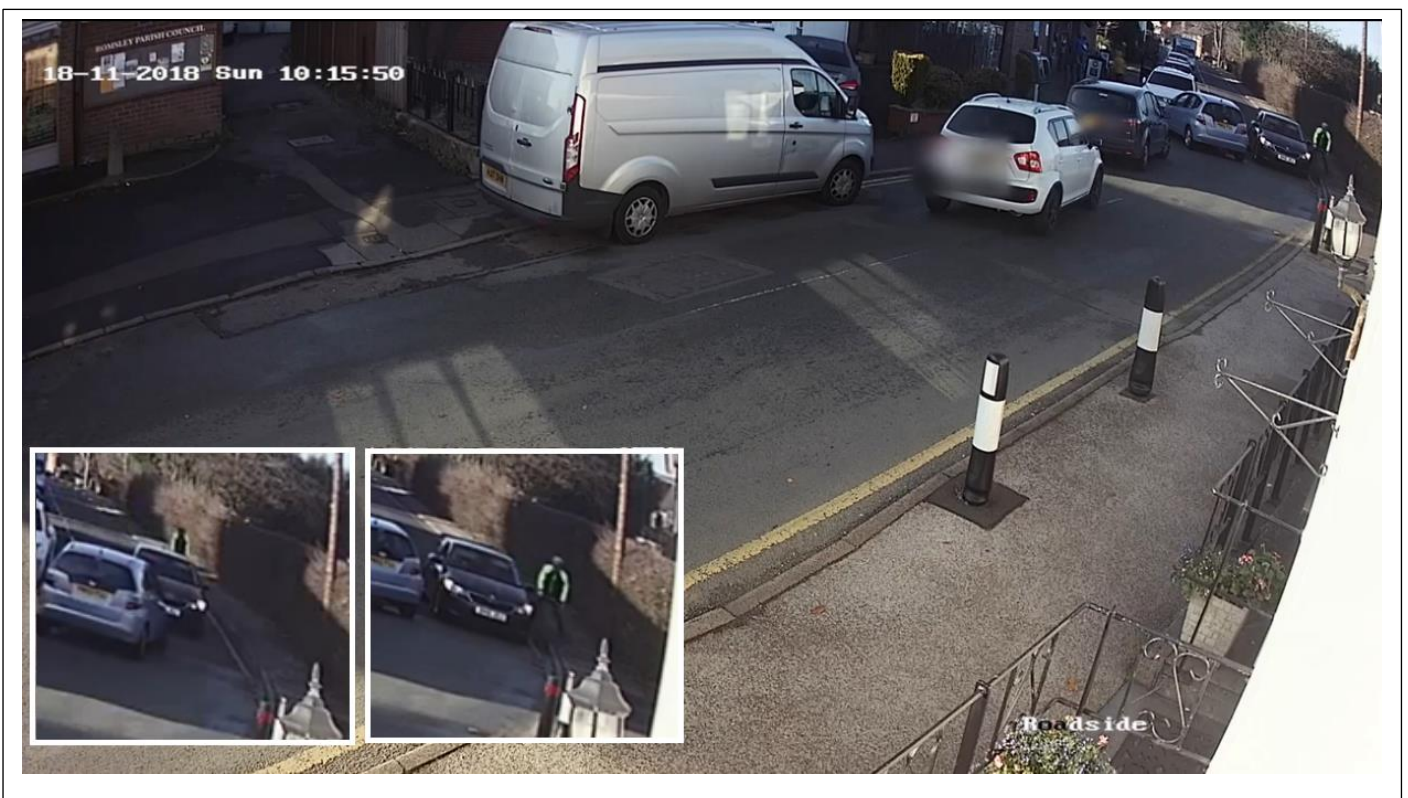




**Batch 1 Saturday 17th November 2018** – Two delivery vehicles nearly collide, and one has to mount the footway to avoid the other.

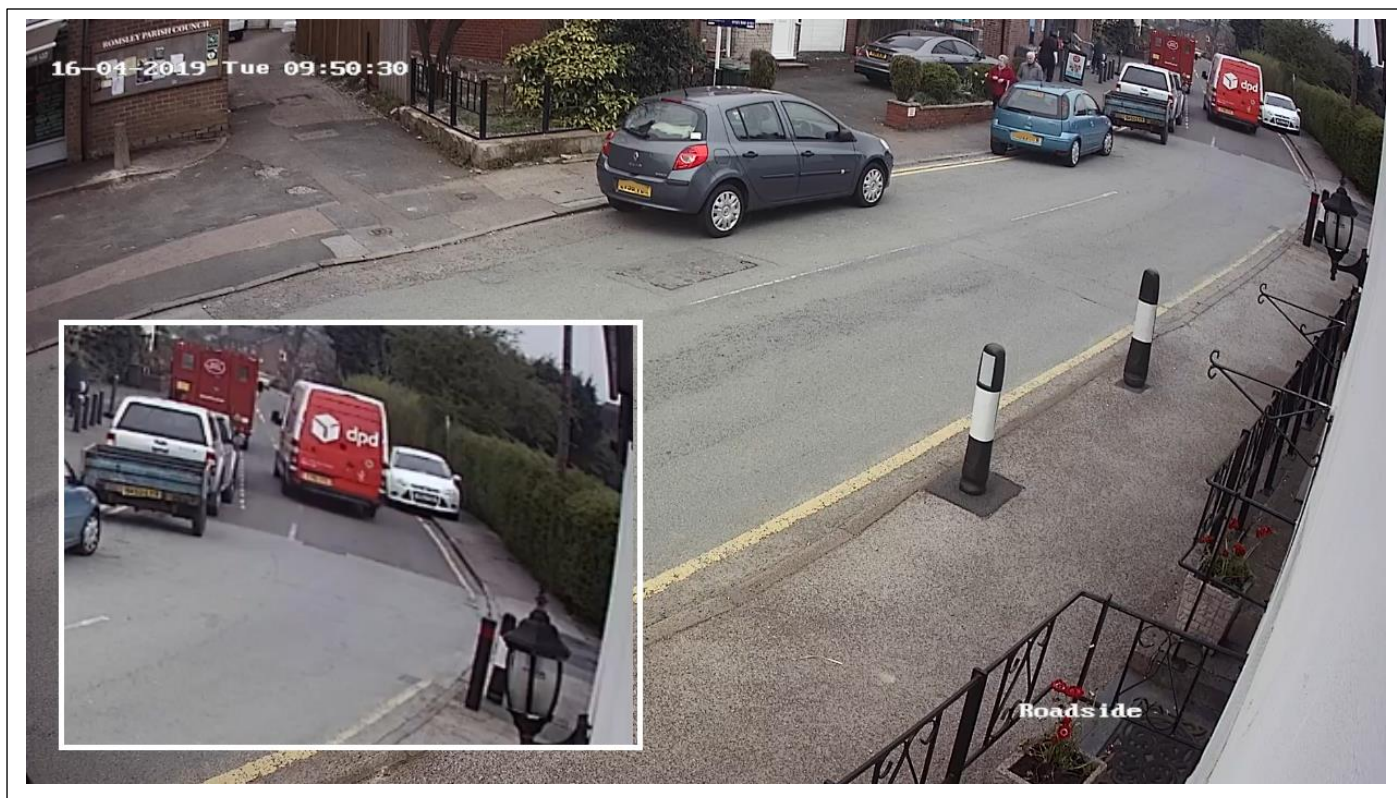


**Batch 1 Sunday 19th November 2018** – A cyclist is struck by a vehicle attempting to manoeuvre onto the footway to avoid another car travelling directly towards it.

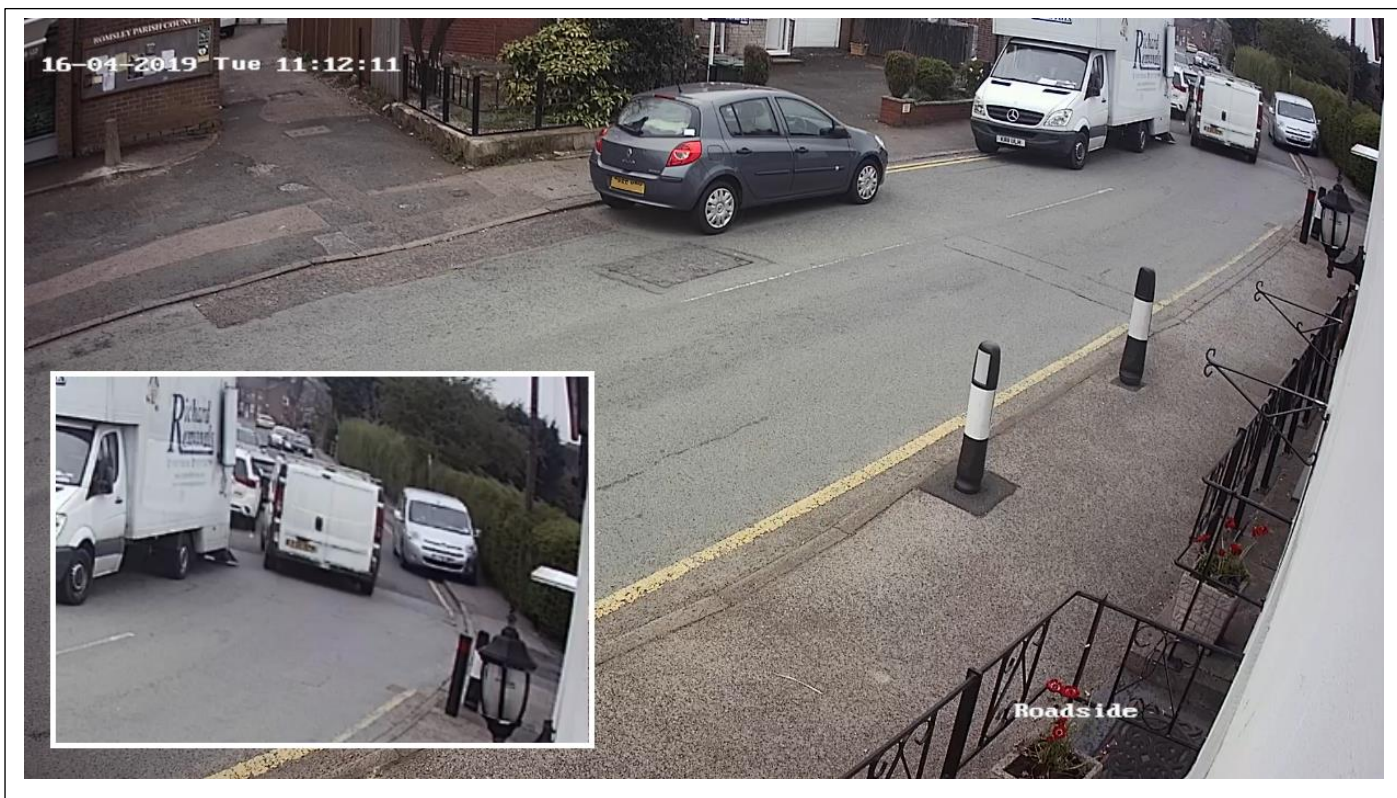




**Batch 2 Tuesday 16th April 2019 – Car mounts and drives along the footway at speed.**

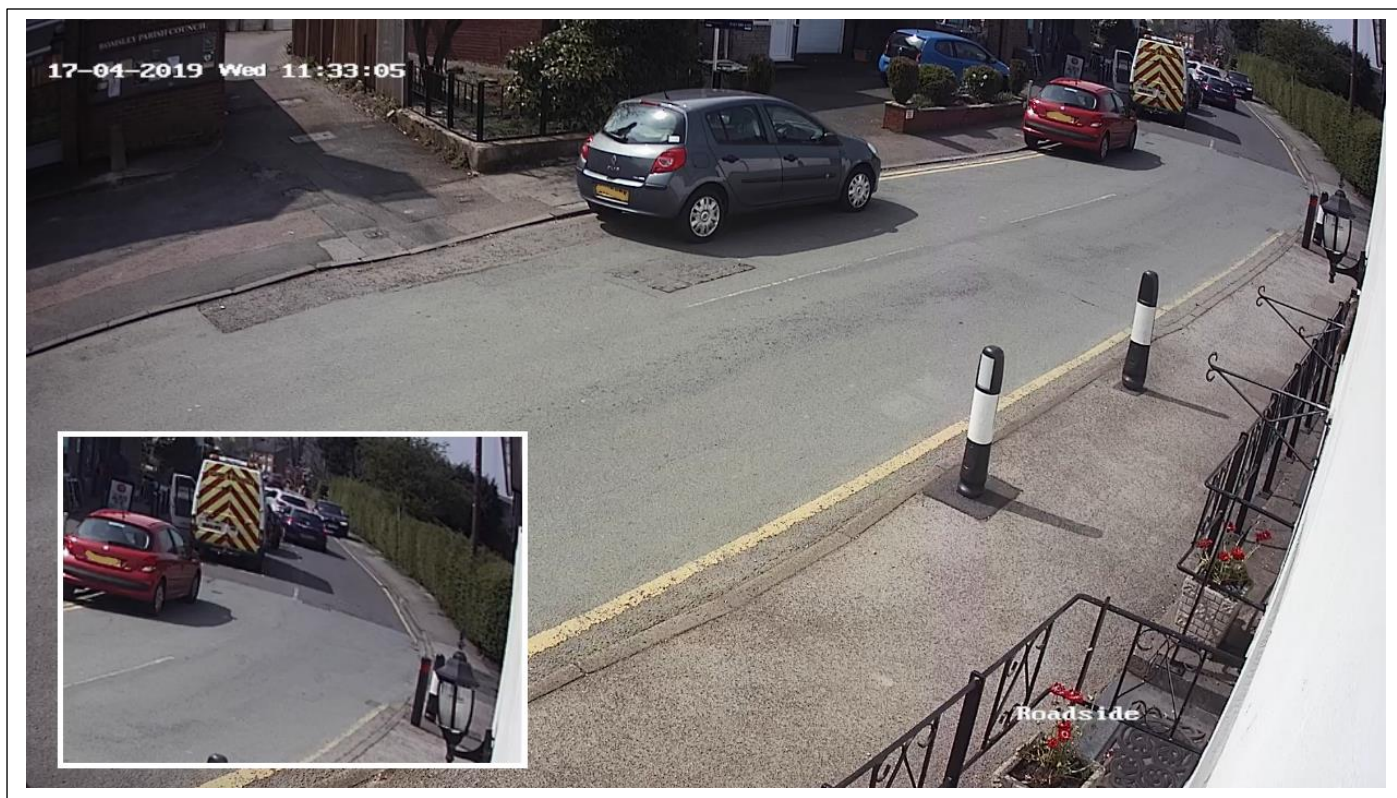


**Batch 2 Tuesday 16<sup>th</sup> April 2019 – Car mounts and drives along the footway to avoid stop[ping for a light goods vehicle.**





**Batch 2 Wednesday 17th April 2019 – Car mounts and drives along the footway.**



**Batch 2 Wednesday 17th April 2019 – Car mounts and drives along the footway to avoid the Parish Bus.**

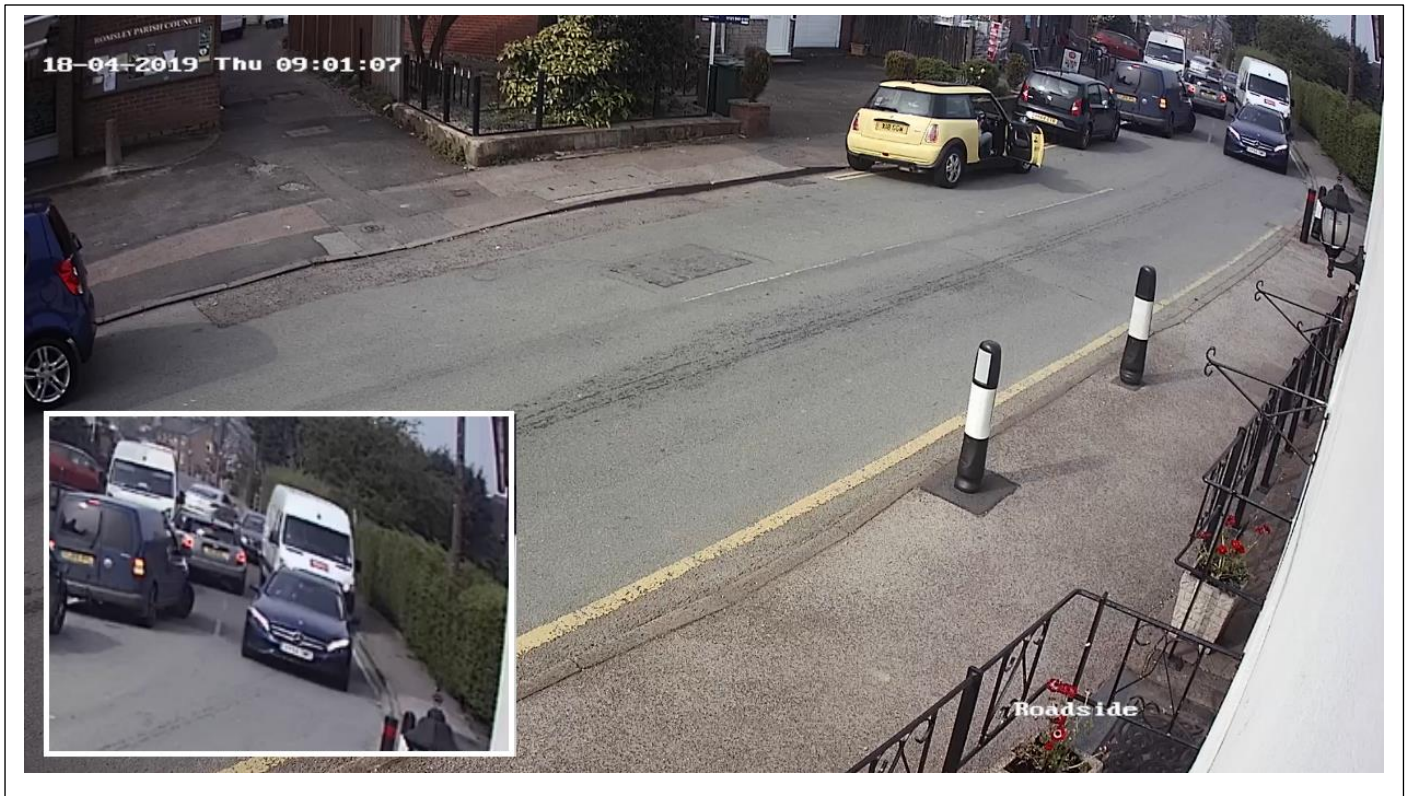


Romsley Parish Council operates an open communications policy and routine correspondence will be made available to its Residents unless it contains commercially sensitive, confidential or personal information and is marked accordingly.

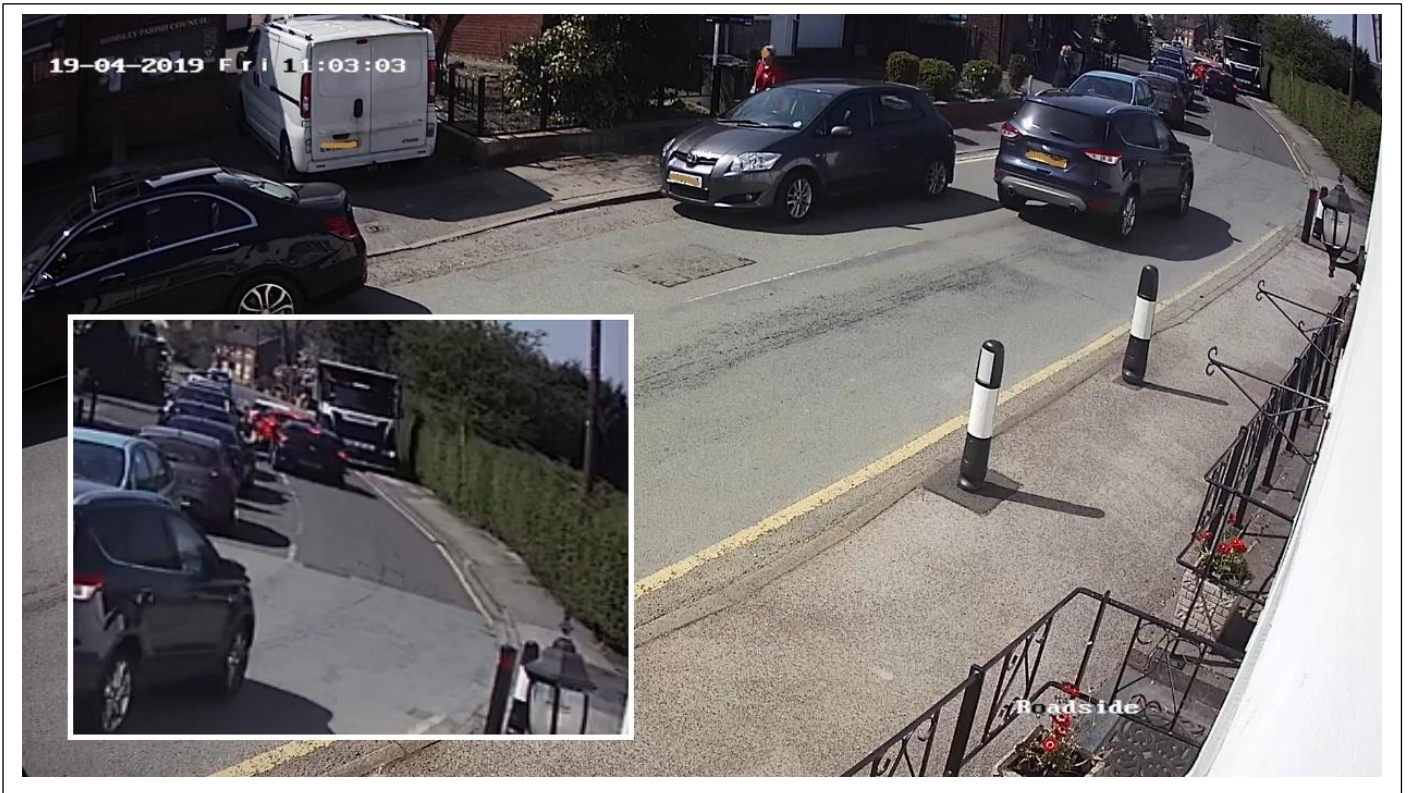
Please address all correspondence to Romsley Parish Council, 167 Bromsgrove Road, Hunnington, B62 0JU.  
E-mail [romsleyparish@btinternet.com](mailto:romsleyparish@btinternet.com) Telephone: 01562 712050



**Batch 2 Thursday 18th April 2019 – Light Goods Vehicle mounts the footway to maintain progress.**

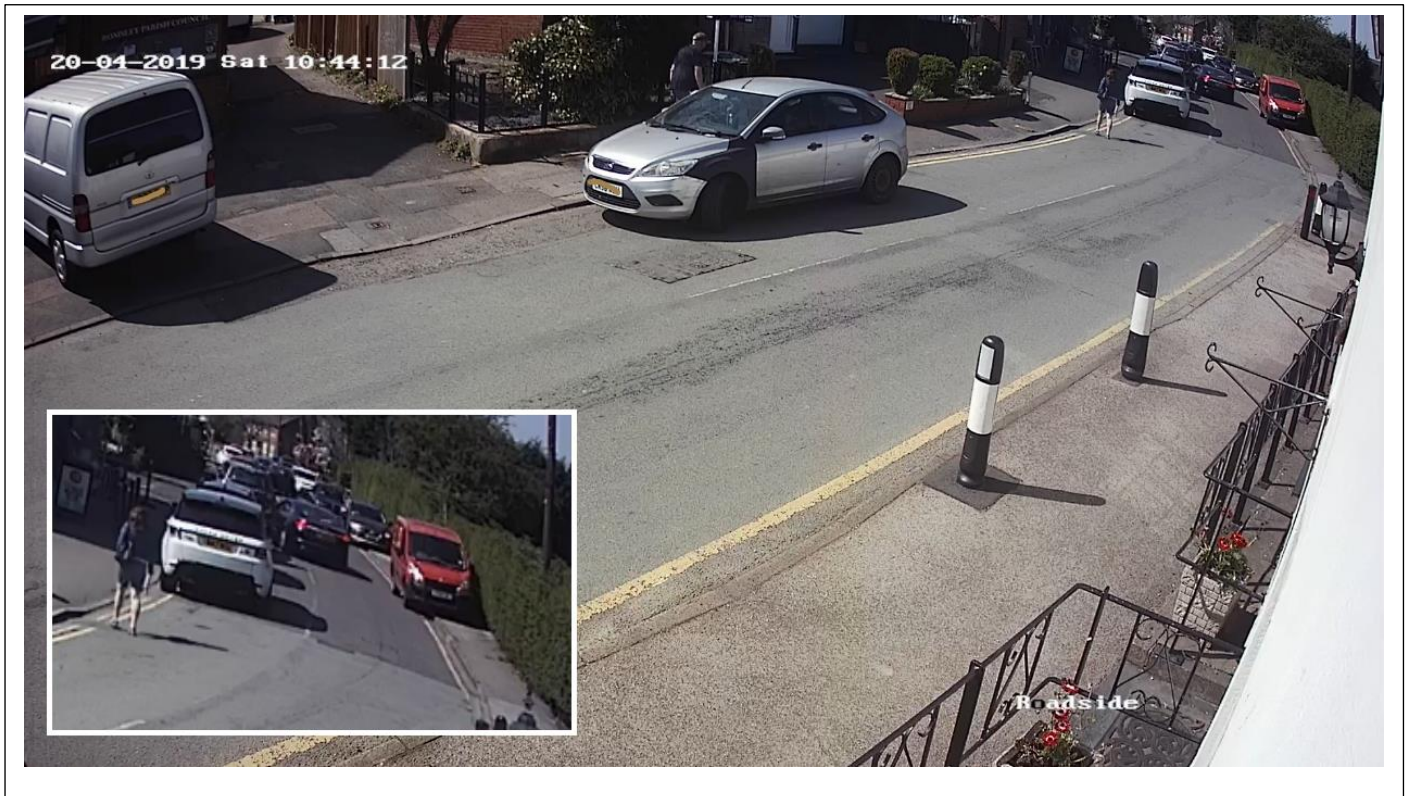


**Batch 2 Friday 19th April 2019 – A Heavy Goods Vehicle (HGV) mounts and drives along the footway**

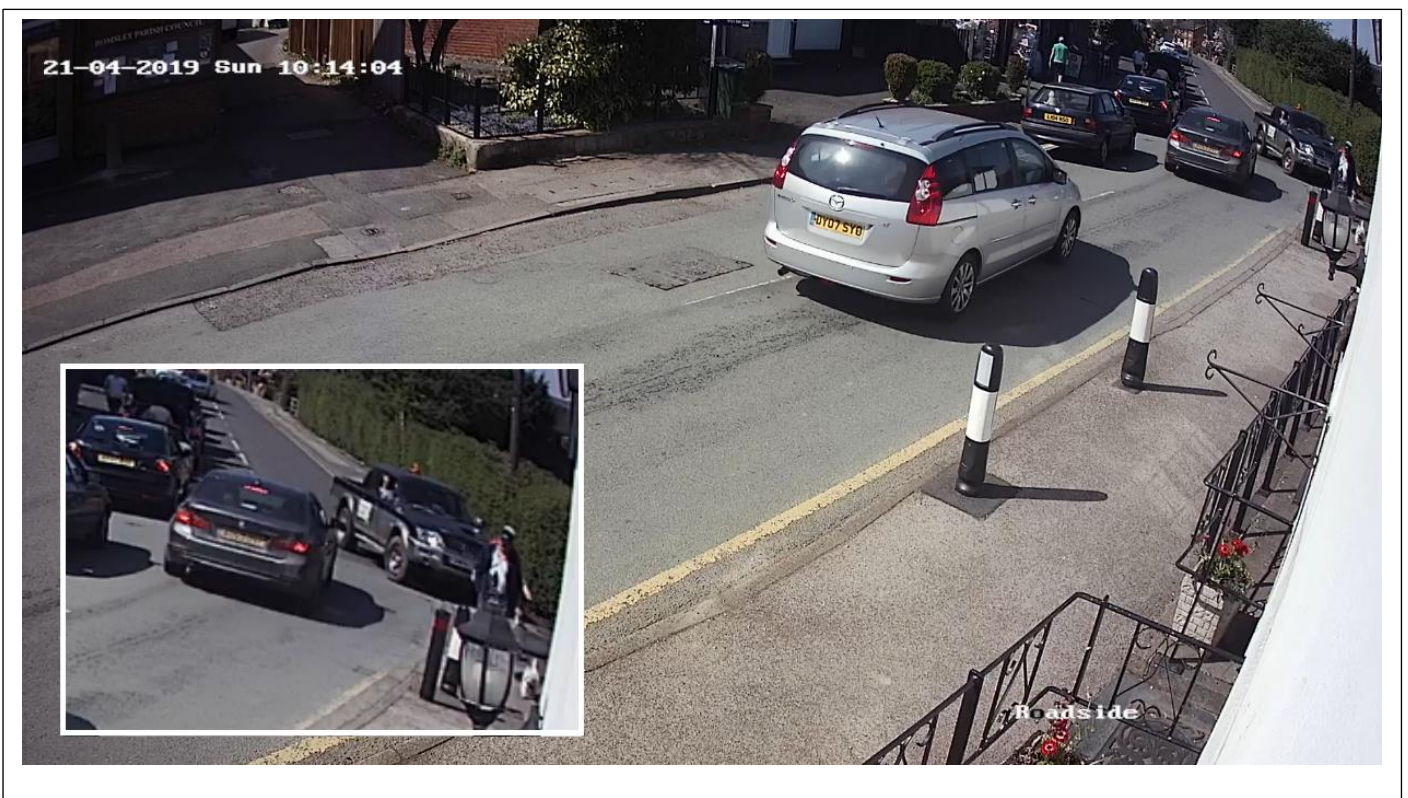




**Batch 2 Saturday 20th April 2019** – A Light Goods Vehicle and multiple vehicles mount and drive along the footway.



**Batch 2 Sunday 21st April 2019** – A Light Goods vehicle mounts the footway to allow other vehicles to pass whilst pedestrians are in close proximity.

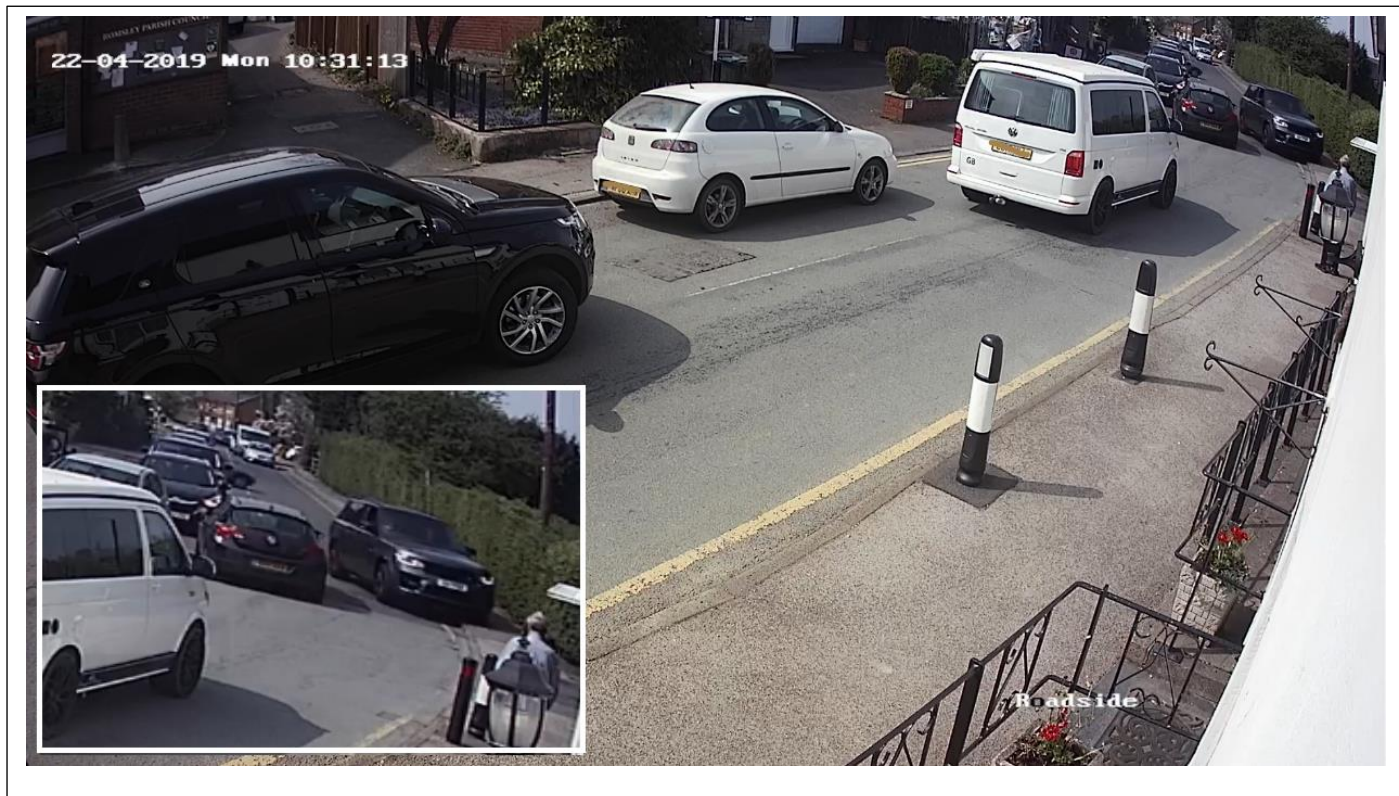


**Batch 2 Monday 22nd April 2019** – A car mounts the footway to allow other vehicles to pass.

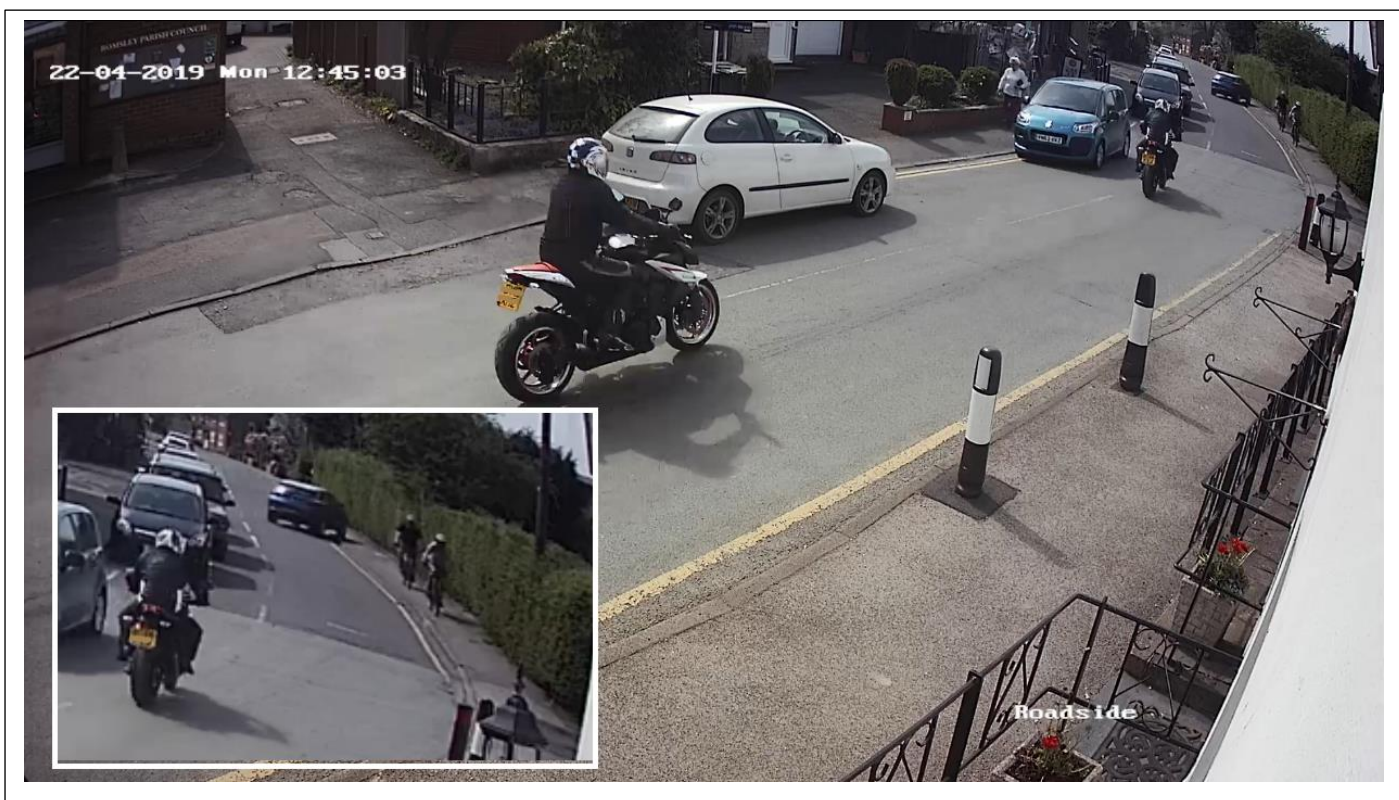
*Romsley Parish Council operates an open communications policy and routine correspondence will be made available to its Residents unless it contains commercially sensitive, confidential or personal information and is marked accordingly.*

*Please address all correspondence to Romsley Parish Council, 167 Bromsgrove Road, Hunnington, B62 0JU.  
E-mail [romsleyparish@btinternet.com](mailto:romsleyparish@btinternet.com) Telephone: 01562 712050*





**Batch 2 Monday 22nd April 2019 – A vehicle driven erratically mounts the footway.**

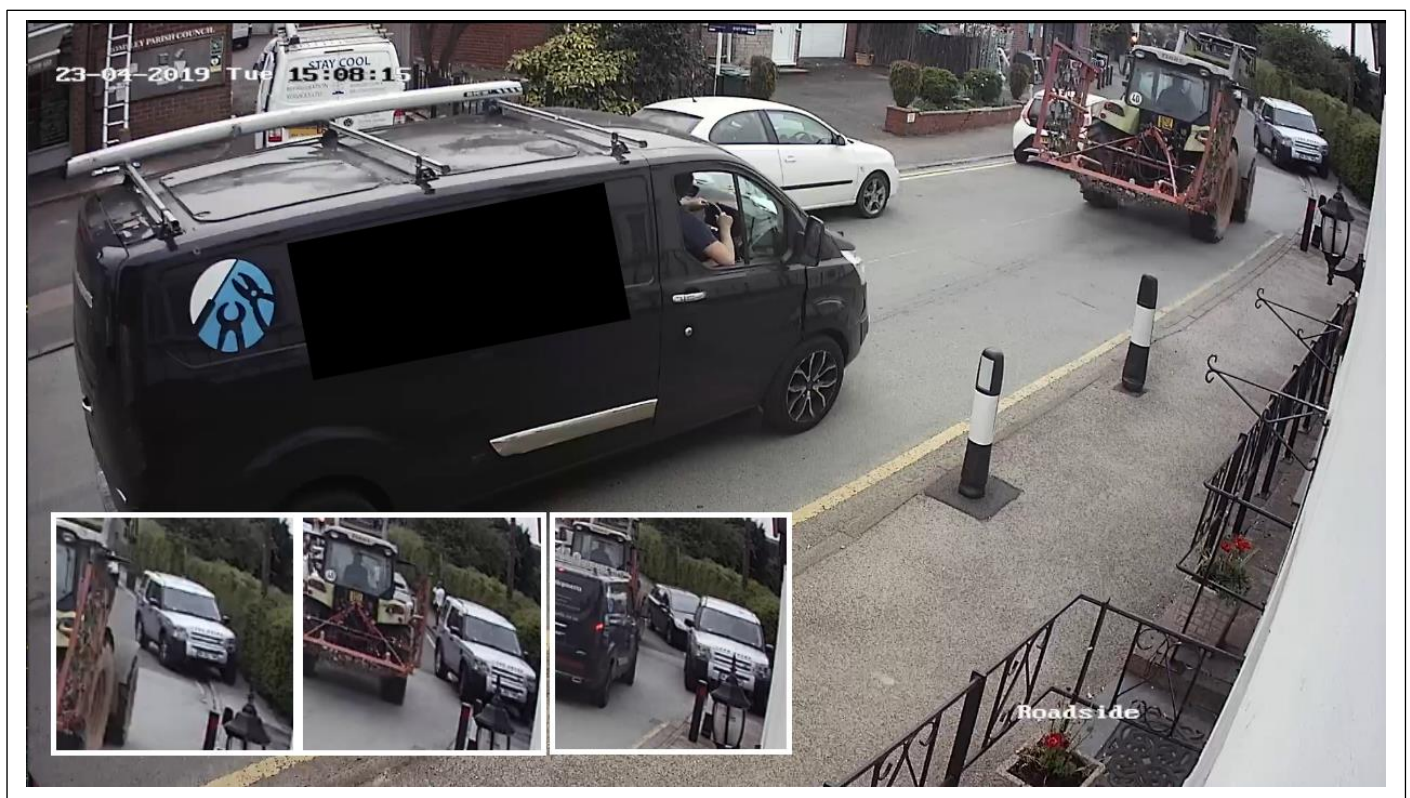




**Batch 2 Tuesday 23rd April 2019** – A car mounts and drives along the footway to avoid a car and caravan.



**Batch 2 Tuesday 23rd April 2019** – Multiple vehicles mount and drive along the footway to avoid congestion



Romsley Parish Council operates an open communications policy and routine correspondence will be made available to its Residents unless it contains commercially sensitive, confidential or personal information and is marked accordingly.

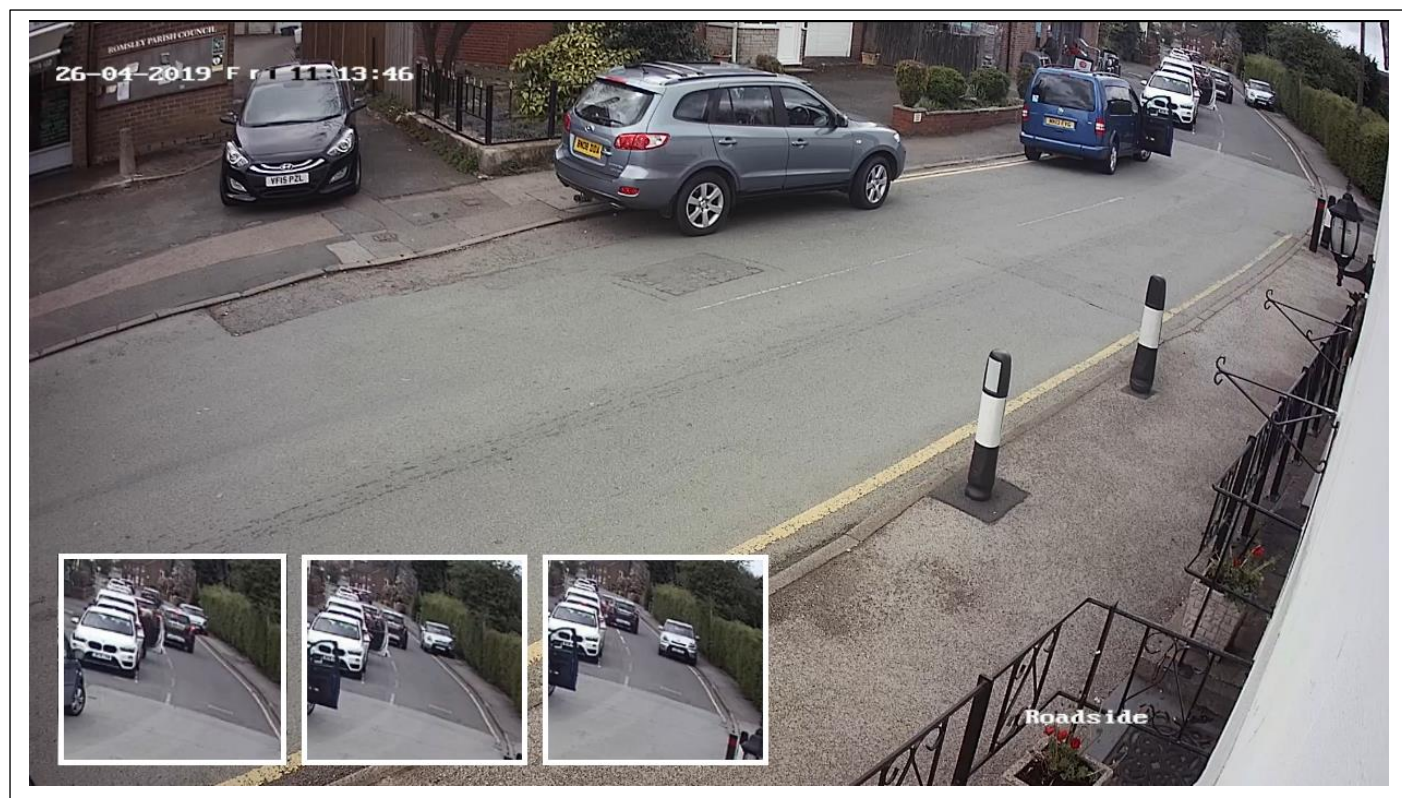
Please address all correspondence to Romsley Parish Council, 167 Bromsgrove Road, Hunnington, B62 0JU.  
E-mail [romsleyparish@btinternet.com](mailto:romsleyparish@btinternet.com) Telephone: 01562 712050



**Batch 2 Friday 26th April 2019** – A car mounts and drives along the footway at speed to avoid congestion.



**Batch 2 Friday 26th April 2019** – A car mounts and drives along the full length of the pedestrian footway at speed to avoid congestion.

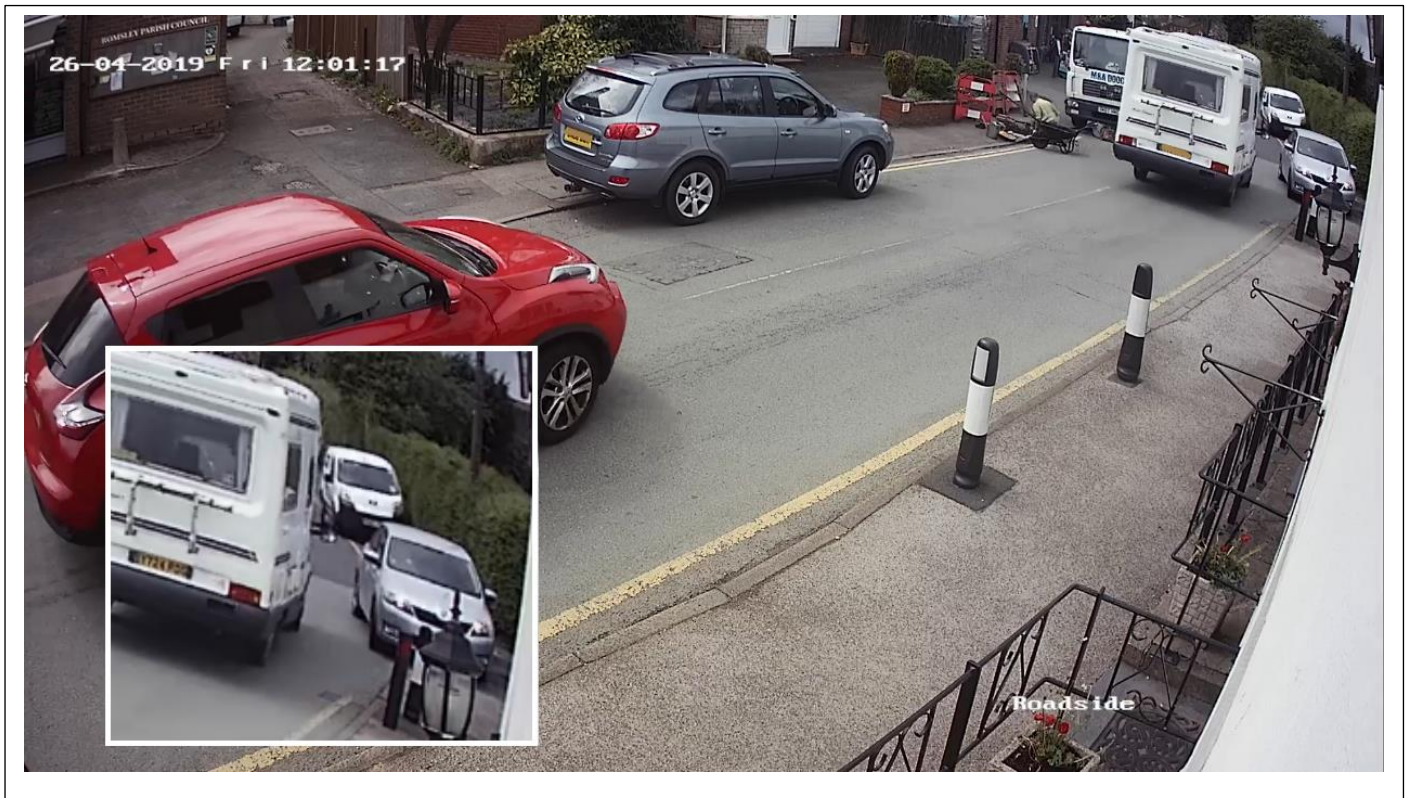


Romsley Parish Council operates an open communications policy and routine correspondence will be made available to its Residents unless it contains commercially sensitive, confidential or personal information and is marked accordingly.

Please address all correspondence to Romsley Parish Council, 167 Bromsgrove Road, Hunnington, B62 0JU.  
E-mail [romsleyparish@btinternet.com](mailto:romsleyparish@btinternet.com) Telephone: 01562 712050



**Batch 2 Friday 26th April 2019** – Multiple vehicles mount and drive along the full length of the pedestrian footway at speed to avoid congestion.



**Batch 2 Friday 26th April 2019** – A car mounts and drives along the pedestrian footway to avoid congestion.



Romsley Parish Council operates an open communications policy and routine correspondence will be made available to its Residents unless it contains commercially sensitive, confidential or personal information and is marked accordingly.

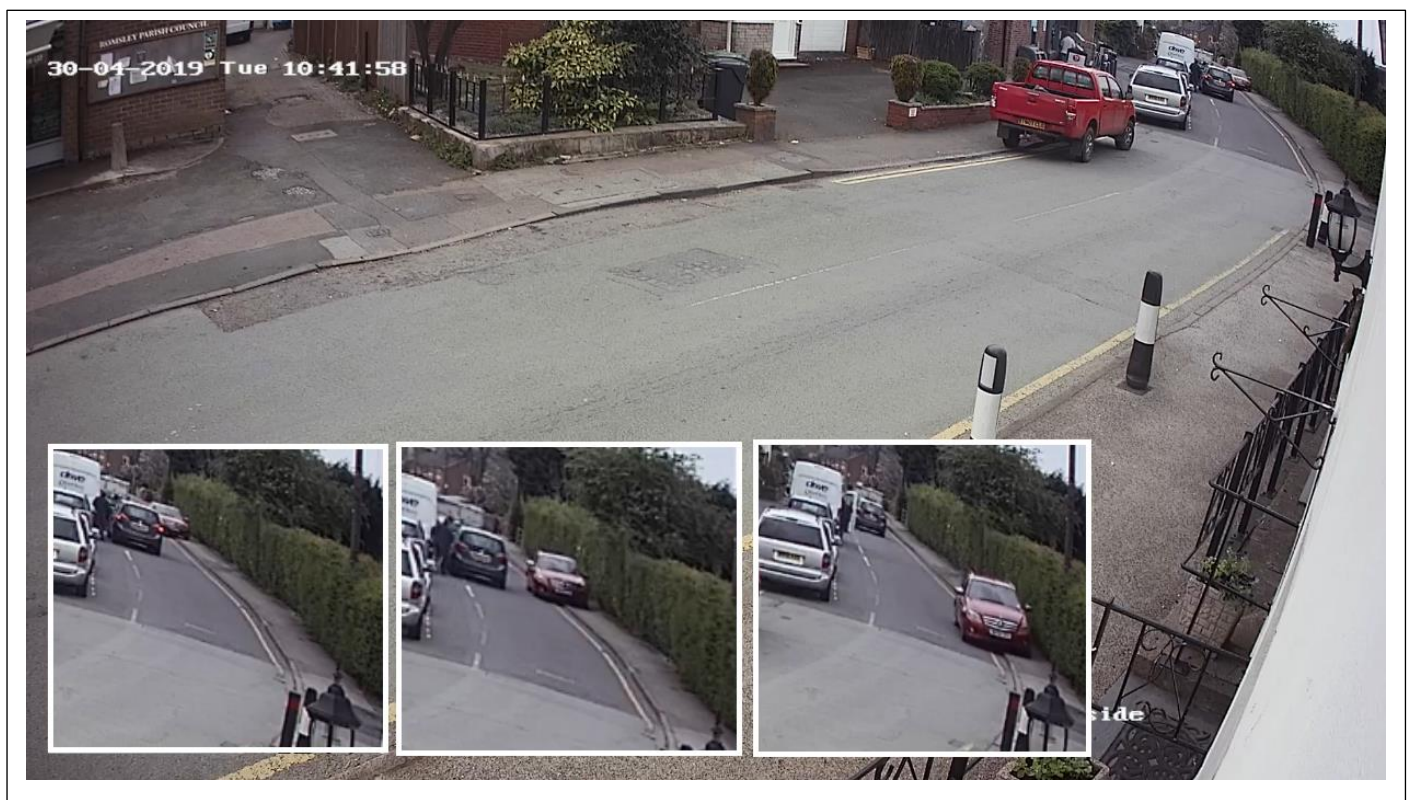
Please address all correspondence to Romsley Parish Council, 167 Bromsgrove Road, Hunnington, B62 0JU.  
E-mail [romsleyparish@btinternet.com](mailto:romsleyparish@btinternet.com) Telephone: 01562 712050



**Batch 2 Sunday 28th April 2019** – A car mounts and drives along the full length of the pedestrian footway at speed to avoid congestion.

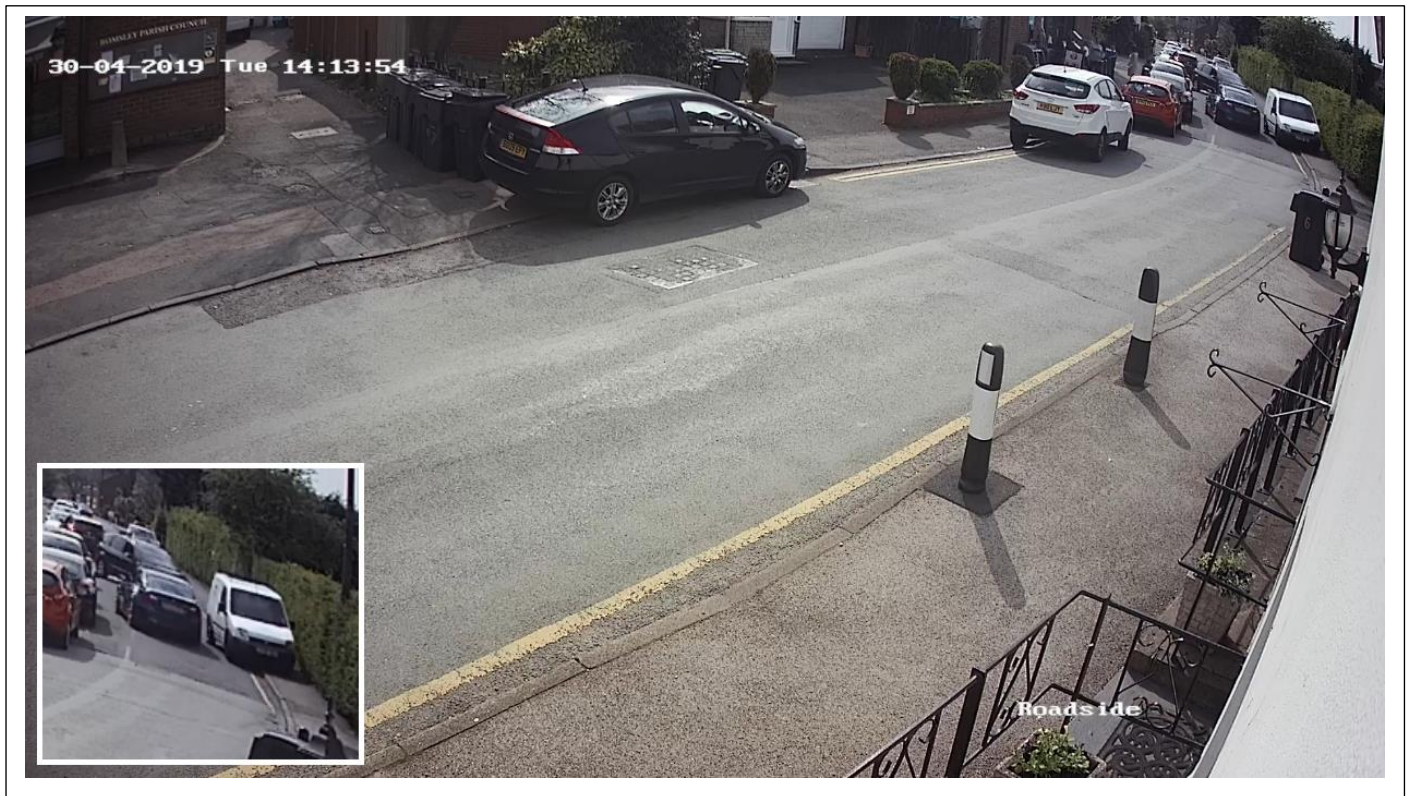


**Batch 2 Tuesday 30th April 2019** – A car mounts and drives along the full length of the pedestrian footway at speed to avoid congestion.





**Batch 2 Tuesday 30th April 2019** – A light goods vehicle mounts and drives along the full length of the pedestrian footway to avoid congestion.



**Batch 2 Wednesday 1st May 2019** – A Heavy Goods Vehicle mounts the kerb whilst manoeuvring.

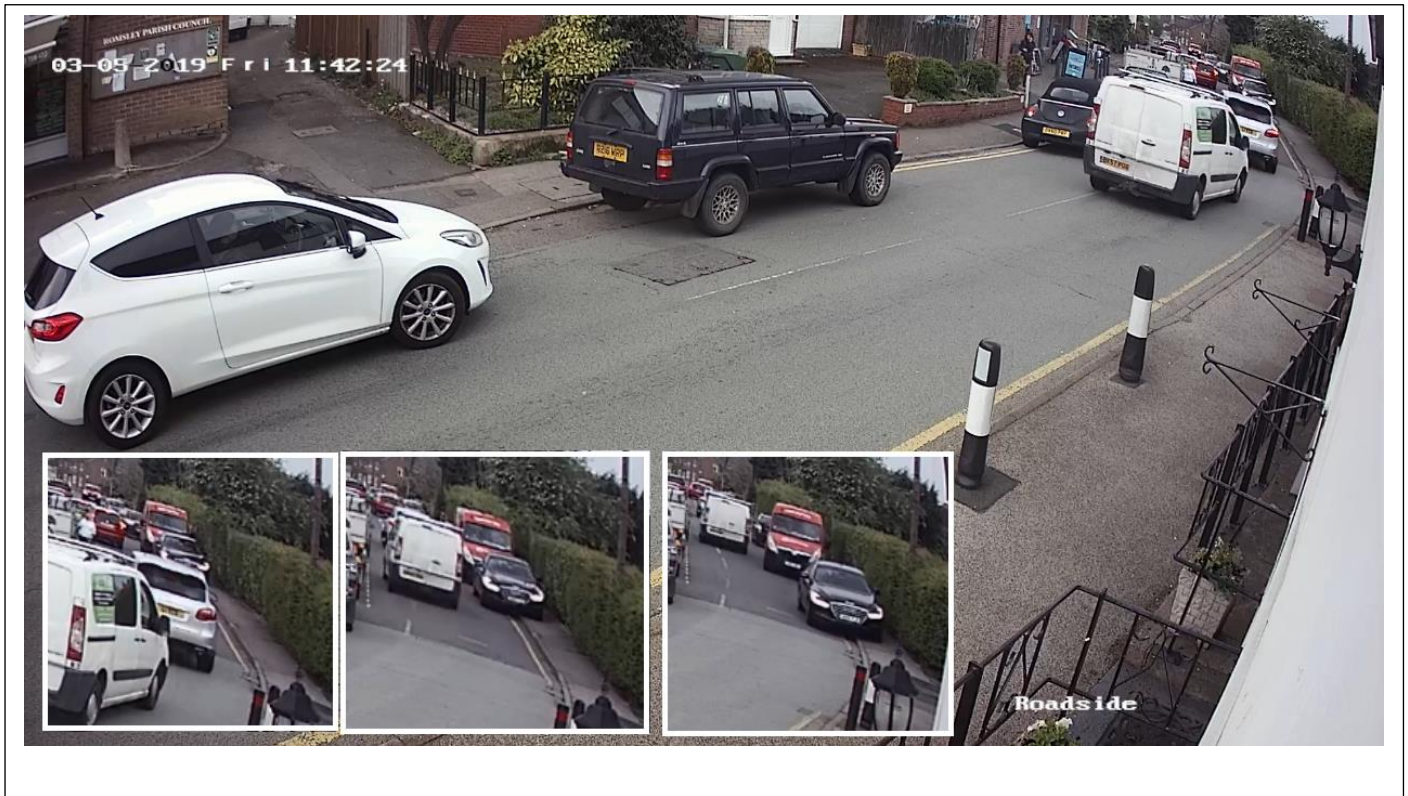


Romsley Parish Council operates an open communications policy and routine correspondence will be made available to its Residents unless it contains commercially sensitive, confidential or personal information and is marked accordingly.

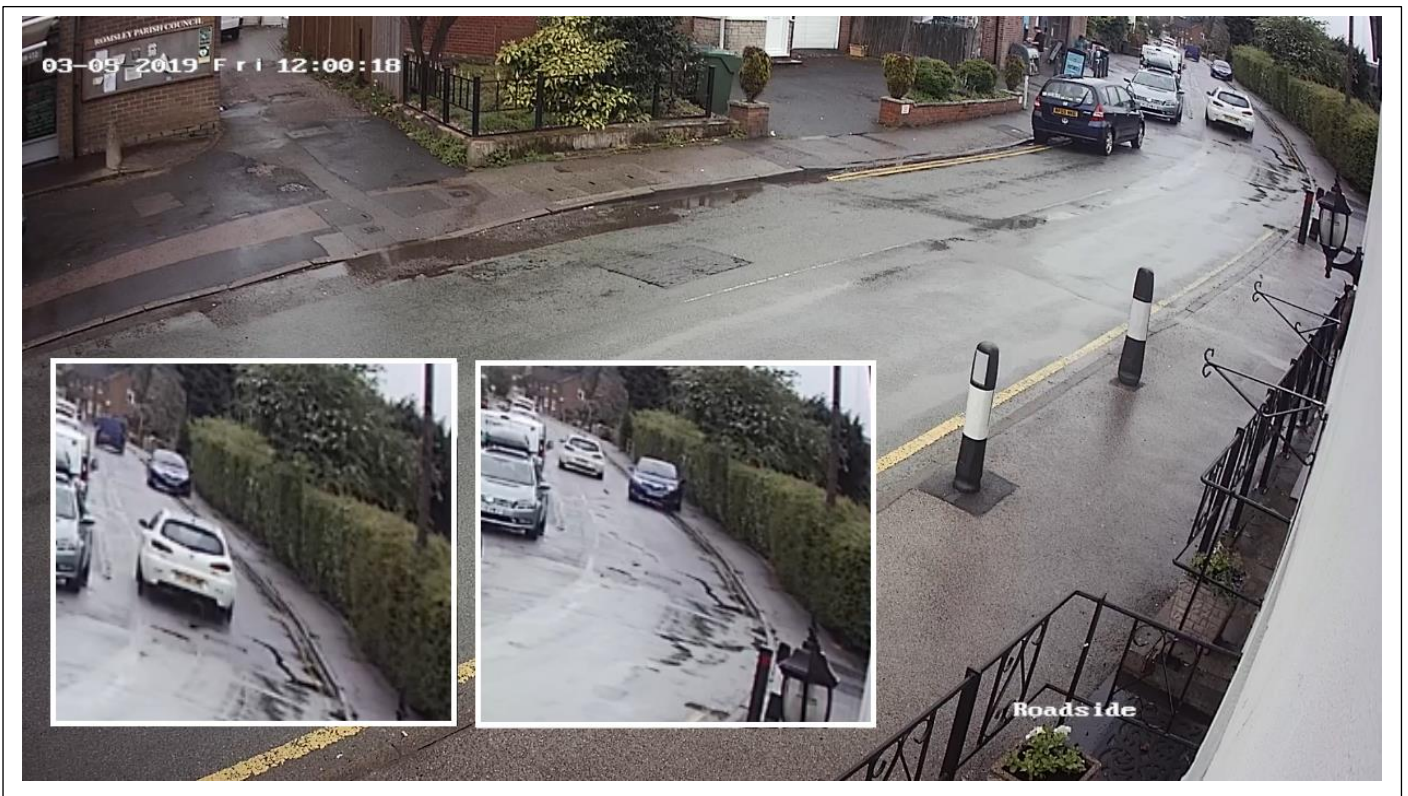
Please address all correspondence to Romsley Parish Council, 167 Bromsgrove Road, Hunnington, B62 0JU.  
E-mail [romsleyparish@btinternet.com](mailto:romsleyparish@btinternet.com) Telephone: 01562 712050



**Batch 2 Friday 3rd May 2019** – A car and Light Goods Vehicle (LGV) mounts and drives along the full length of the pedestrian footway to avoid congestion.



**Batch 2 Friday 3rd May 2019** – A car mounts and drives along the full length of the pedestrian footway at speed.





## Annexe 3 – Freedom of information request - December 2018

www.romsleyparishcouncil.gov.uk



Romsley Parish Council  
167 Bromsgrove Road  
Worcestershire, B62 0JU  
romsleyparish@btinternet.com

3rd December 2018

To: Bromsgrove Planning Department  
Cc: Ruth Bamford – Bromsgrove Planning  
Cc: G N Denaro – Leader of Bromsgrove Council  
Cc: Karen May – County Councillor, Clent Hills Division  
Cc: Margaret Sherry – District Councillor, Belbroughton and Romsley Ward  
Cc: Chris Allen-Jones – District Councillor, Belbroughton and Romsley Ward

**Romsley Parish Council has submitted the following Freedom of Information (FOI) request to Worcestershire County Council Highways Department regarding Planning application 18/00282/FUL (Amended) – Yew Tree Farm, Romsley.**

*Romsley Parish Council is requesting details on the information used by Worcestershire County Council Highways Department, to support their response to the planning development 18/00282/FUL (Bromsgrove District Council Reference) for 7 houses on Yew Tree farm, St Kenelm's road, Romsley, Worcestershire.*

*Specifically, we require;*

1. *Details of all the surveys, assessments and site visits associated with traffic safety, traffic congestion or traffic monitoring that have been undertaken by Worcestershire CC Highways Department or its agents, since November 2015. These details should include;*
  - a) *The type and specific purpose of the survey, assessment or visit.*
  - b) *The name(s), role(s) and qualification(s) of those undertaking and / or overseeing the survey(s), assessment(s) or visit(s).*
  - c) *The date(s) of the survey(s), assessment(s) or visit(s).*
  - d) *The arrival time, leaving time and duration of the activity.*
  - e) *The specific data collection point(s) on St Kenelm's Rd.*
  - f) *The type and volume of information obtained.*
  - g) *All documentation (including handwritten notes, video & images, maps, diagrams, reports, spreadsheets and documents) generated through the survey(s), assessment(s) or visit(s).*
2. *Copies of all internal and external correspondence (including copies of any attachments) and copies of any prepared documentation that deals with the traffic safety or traffic congestion associated to, or referenced in, this planning application.*
3. *Copies of all internal and external correspondence (including copies of any attachments) and copies of any documentation that deals with the Unilateral Undertaking that has been agreed between Worcestershire CC Highways Department and the developer for this planning application, Kendrick Homes. (This must include any solution optioneering, scheme design, cost calculations, delivery schedules and any assessments of value, safety benefits and sustainability.)*

Romsley Parish Council operates an open communications policy and routine correspondence will be made available to its Residents unless it contains commercially sensitive, confidential or personal information and is marked accordingly.

Please address all correspondence to Romsley Parish Council, 167 Bromsgrove Road, Hunnington, B62 0JU.  
E-mail [romsleyparish@btinternet.com](mailto:romsleyparish@btinternet.com) Telephone: 01562 712050