

ROMSLEY NEWS

Your Update from Romsley Parish Council

Your Parish Council – Page 2

Footpath News – Page 3

Playing Fields News – Page 3

Voting Informaion – Page 4

Up and coming events – Page 4

Advice on keeping your home and property safe – Page 5

Reporting an issue to BDC or WCC – Page 5

What's on in Romsley – Page 6

Roles of the Parish Council – Page 7

Meet Your Parish Council – Page 8



Your Parish Council

Elections are held every four years to vote for County, District and Parish Councillors. A Parish Council (PC) represents the interests of the local community. Romsley has always had an active PC working hard to improve and enhance the village, defend services when they are under threat and engage with County and District Councils to ensure the upkeep of our infrastructure.

Romsley Parish Council has, working for you, achieved the following -

- Installed a small gym in the playing fields for use by residents (Tesco grant funded).
- Provided SmartWater theft prevention kits, free of charge, to every resident (purchased with the help of West Mercia Police).
- When our local bus service was under threat of withdrawal, members of the Parish Council met with County Councillors and local transport officers to ensure that this vital service was continued.
- Set up a website, www.romsleyparishcouncil.gov.uk, to help improve the effectiveness and visibility of the Parish Council and provide another way for residents to get in touch. A Facebook page has been established which was used recently to run an online survey regarding play area enhancements. For those residents who do not use Social Media, a regular Newsletter is delivered to every household in the parish.
- When the village was faced with a major Civil Engineering project of national importance, the Parish Council worked with Severn Trent and facilitated local groups to minimize the impact of the Birmingham Resilience Project on the area.
- Employed a maintenance person, Nigel Williamson, to improve the appearance of the village (extra grass cutting and hedge trimming), to help protect the financial investment we have made in our homes.
- Worked with the Paths Warden, Stuart Smith and his wife Nina, to maintain and improve the local pathways in the parish, replacing gates and stiles and promoting local walks i.e. Pennyfields.
- Installed dog waste bag dispensers to help dog owners to clean up after their pet.
- During the Covid 19 Pandemic, the Parish Council set up a helpline for vulnerable residents who were shielding. The Clerk, Ruth Mullett, collected and delivered essential shopping and prescriptions.
- The wooden bridge on the pathway from Romsley to Uffmoor Wood has been replaced and the stile made more accessible to maintain the link between the village and this area (working with The Woodland Trust).
- A path around the playing fields was built. This idea had been discussed for many years but the cost was prohibitive. With the generosity of local resident, Mr. Gill, the path was built and has proved to be a great success making the playing fields an enjoyable and accessible walk.
- Tree and bulb planting and wildflower seeding has been undertaken to enhance the playing fields with picnic benches (using a grant from BDC through Cllr Karen May) and commemorative benches being installed.
- With the involvement of Friends of Romsley, planters have been installed around the village. Planting has been generously sponsored by Paul Billingham of Beechcroft Garden Centre.
- Worked with Worcestershire CC, Openreach, the DCMS and the Government Gigabit Voucher Scheme to bring Fibre Broadband to over 200 residential and business premises in the village.
- Run events throughout the year that appeal to most residents - Romstock, St Kenelm's Day and a Carol Service all of which are self-funding.
- Organised litter picking around the village with local groups and residents.
- Promoted the use of the playing fields to provide services for the village i.e. Sidemoor Fish and Chips.
- Worked with Stuart Smith to erect a permanent memorial commemorating the crash of a Wellington Bomber in 1944.
- Commented on planning with a view to protect and enhance the village. Facilitated residents groups to oppose unsuitable plans (the Rolling Hills) and worked with relevant companies and authorities to improve problem areas of the village (new housing opposite the Co-op).
- Reported issues on our roads and pavements to Worcestershire CC to get repairs done.
- Run consultation exercises with residents using a questionnaire booklet and using Facebook.

Footpath News – Stuart Smith, Paths Warden

The first parish walk of this year, the New Year walk saw eight brave souls joining me and Nina for a walk around Clent. The weather forecast for the day was dire which may have accounted for what was the lowest turnout of any previous parish walk. However, apart from some rain at the summit it didn't prevent a brief stop to admire the impressive view of scudding clouds scraping the tops of the various hills in the distance. Things improved from then on with even some sunshine before the walk ended and it turned out to be a very enjoyable walk.

Due to unforeseen circumstances I am unable to lead the "Out of Parish" walk on the date originally advertised in July. It will now take place the following Saturday on July 29th instead, please amend your calendars!

The list of Parish walks and start for this year which all start at 10am are:

April 22nd Rumbow Cottages walk, Recreation ground car park

May 20th Wild Garlic walk, The Sun

June 17th Orchid walk, The Sun

July 29th Out of Parish walk, Lickey Beacon car park

September 16th Hunnington walk, Recreation ground car park

Anyone wishing to be included in an email list to receive details of Parish walks and footpath information is welcome to make contact with me: stuninasmith@yahoo.co.uk

Many of you will be familiar with the footpath that starts from the recreation ground by the Scout Headquarters. This path has always suffered from mud during the winter months, a condition that has been made worse on the initial stretch now that it is enclosed by a fence and has a kissing gate added. Following comments from residents the Parish Council has been looking at ways to improve this part of the path. After discussion with the County Council that has a responsibility for the surface of footpaths, the Parish Council has agreed to contribute funds to aid the improvement of this part of the footpath, the work will be carried out by county council contractors. I'm not sure of timescales but, when completed, the problem with mud along this part of the path and particularly at the kissing gate should be removed. It should also help prevent vegetation encroaching onto the path in summer.

I shall be meeting with an officer from the County Countryside Services later in the year to discuss what improvements could be made to the section of path on the Rolling Hills where it passes through a small wood. This section also gets a bit treacherous with mud for several months each year. I don't think the problem will be resolved easily and I will not be holding my breath but at least it will be highlighted.

Remember, walking has been proven to be beneficial both physically and mentally – and it's free!

Playing Fields News

Crocus, snowdrops and bluebell bulbs have been planted around the path to make your walk even more enjoyable. Cherry Blossom trees, some of which have been sponsored by local residents in memory of loved ones, have been planted in the playing fields and around the village.

The Parish Council is in the process of upgrading the play area at the playing fields.

Following consultation with residents (via an on-line survey) a number of meetings have taken place with and quotations received from play equipment companies. Nothing is confirmed in terms of play area lay-out or equipment and further consultation will be organised with residents before this happens.

What we do have now is an idea of the total cost of renewing the play area and work is on-going to secure relevant funding for this.

This is a major project for the Parish Council in the months ahead, funding is a challenge so there will not be a quick fix, but we are committed to improving the play area - we will continue to give updates progress is made. If you would like to make a contribution to this project, please come to one of the regular PC Meetings.



You will need Photo ID to vote this year

If you want a postal vote, you must apply by 18th April

Up and coming events 2023

Kings Coronation Celebrations

Sunday 7th May

Initial talks have taken place between a number of local groups including the Scouts, Hunnington Parish Council and the Craft Group to discuss how to structure the event on Sunday 7th May. We will be using the playing fields where you can bring your own picnic, drinks and gazebo (if the weather is inclement). You can pre order an afternoon cream tea, made by a local caterer, which includes sandwiches, cakes and scones with cream and jam, from the Clerk at the cost of £10. There will be music from a DJ and stalls run by the Scouts and the School HSA. More details to follow.



Romstock 2023

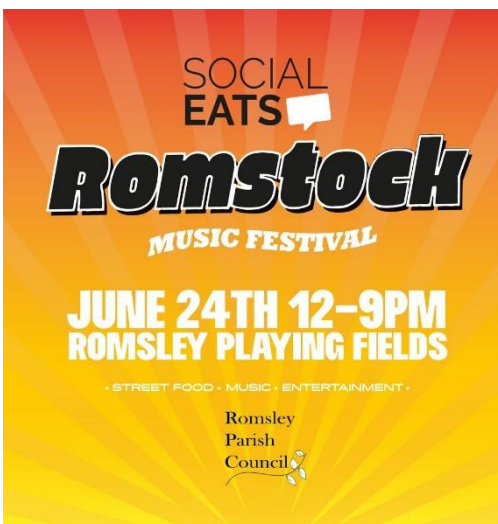
Saturday 24th June

After the success of Romstock 2022 (despite the weather) Romsley Parish Council has teamed up with local business, Social Eats to organise Romstock 2023.

There will be a wide variety of food outlets to suit every taste. There will be bars serving drinks including a Real Ale Bar.

Dan Budd will be returning as Robbie Williams along with Romstock favourites Abba. Other acts will be advertised, on the Romstock social media site, as they confirm.

Early Bird tickets are now on sale at Romstock 2023 which will link you to [skiddle.com](https://www.skiddle.com). All T&Cs for the event are on this site.



St Kenelm's Day

Saturday 15th July

This is a celebration for the residents of Romsley and Hunnington funded by the proceeds of Romstock. The Stourport Brass Band will be playing a selection of music including favourite classical pieces, film scores and tv themes. The ever popular Bluebird Belles will be entertaining us with songs from across the decades. The evening ends in a spectacular fashion with a fireworks display.



Annual Carol Service

Wednesday 6th December

We will be holding the Carol Service in the Church Hall. This is a long established event, popular and valued. The service will feature the Cradley Heath Salvation Army Band. Mulled wine and mince pies will be served.



Keeping your home and property safe

West Mercia Police send out regular emails detailing car theft, burglaries, fraud and antisocial behaviour happening in our area. These emails also contain suggestions for keeping your home and property safe. To join the mailing list go to the West Mercia Police website and sign up to **Neighbourhood Matters**.



As well as regular patrols around Romsley, the police hold Clinics in the village to give residents the opportunity to voice their concerns and get advice. **The next Police Clinic will be 23rd March 5.30 – 6.30pm in the Park.**

Your home – Lock garden gates with a padlock, install lighting on a sensor, fit anti snap locks, fit a burglar alarm and fit CCTV cameras.

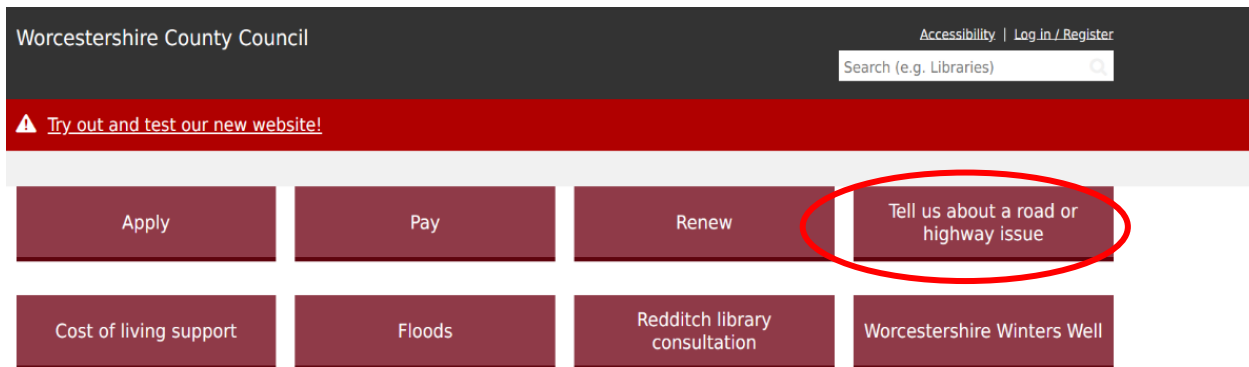
Your car – remove all valuables from your vehicle when you leave it, buy a signal stopping pouch for 'keyless' style vehicles, use a full faced steering lock.

Taking these measures may be costly but will, hopefully, save you money and distress in the long run.

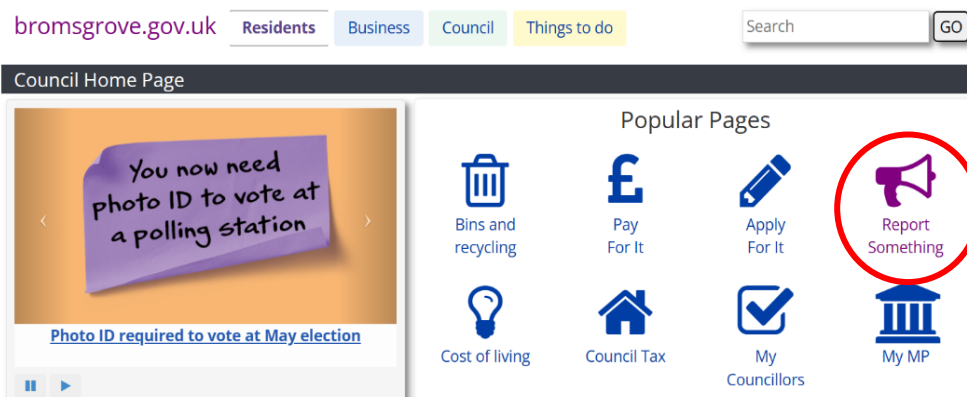
Reporting an issue to the District or County Council

Potholes in our roads and uneven pavements are a constant problem throughout the country and Romsley is no exception. The Parish Council report any issues brought to their attention. When an issue is reported an acknowledgement of the report is sent and council workers make an inspection. The issue is then rectified, sometimes within days, sometimes longer depending on the scale of the work involved.

If you come across a problem to do with roads, pavements or drainage then you can use the Worcestershire County Council website to report it. If you do not have access to the internet you can contact the Parish Council Clerk who will report it for you. Contact details are on the back page.



Use Bromsgrove District Council website to report fly tipping, graffiti, grass cutting or hedging issues, littering or your bin goes missing among other issues.



A dangerously uneven pavement on Bromsgrove Road. Reported and repaired.

What's On in Romsley

ROMSLEY SCOUT CENTRE

- **Beaver Scouts** [6 - 8 years] Monday 6pm
- **Cub Scouts** [8 - 10 years] Tuesday 7pm
- **Scouts** [10 - 14 years] Friday 7.30 pm

Contact: romsleyscouts@hotmail.com or 07970 744417

- **Rainbows** [5 - 7 years] Thursdays

Contact: **Debbie Carter 01562 710329**

- **Guides** [10 - 14 years] Wednesdays

Contact **Emma Pickford-Perry 07437543383**

- **Toddler & Parent Dance Classes**
Tuesdays 9.30 - 10.15am

Contact : Jayne@timminsacademy.com or 07985 734294

- **Translucent Dance Studio**
Parents and Wobblers: Monday – 9.30am
Ballet (5+) & Acro: Tuesday – 4pm
Contemporary (3-11) : Wednesday – 4pm
Translucent Junior (8+) Wednesday – 5.30pm

Contact : www.translucentdancestudio.co.uk - 07311 307077

- **Romsley Art Group**
Tuesday 12 noon

Contact : **Jean Cockin – jeanmcockin1@gmail.com**

- **Baby Ballet**
Monday – 1.00pm

Contact: **Emma 07968700181**

- **Toddler and Parent Ballet and Dance**
Wednesday 2pm

Contact: **Jayne 07985734294**

- **Me Time Fitness** [Mum and little one]
Thursday 9.30am

Contact: **Rachel Cunningham 07491222554**

- **Age UK Move More [50+]**
Thursday at 12.45pm – no need to book
Contact: 01527 570490

- **Yoga**
Monday 3pm

Contact: **Jane jane.yogabtininternet.com**

- **Hillside Ladies Craft Group**
1st Wednesday of the month 10am
Contact: **Mo mo.perks@virgin.net**

ROMSLEY CHURCH HALL

- **Brownies** [7 - 10 years] - Thursdays

Contact: **Debbie Carter 01562 710329**

- **Romsley Toddlers Group** - Wednesdays 10 am
[Term Time]

Contact: **Kelly Marie 07460062162**

- **Worship4All** - 1st Sunday of every month at 11.15am
Family friendly service and craft making

Contact: **Selina Tromans 0121 550 8577**

- **Sensory People** [Care and Therapy for young people]
Every weekday afternoon, except Monday

Contact: **Marion 07879431371**

- **History Society**
4th Tuesday of every month at 7.30pm

Contact: **Paul Share 01562 710197**

- **Hillside Ladies**
2nd Tuesday of every month at 7.30pm

Contact: **Sue Holloway 01562 710414**

- **Tea and Cake Afternoon**
Mondays 2.00 - 3.30pm Fortnightly

Contact: **Selina Tromans 0121 550 8577**

- **Ballroom Dancing**
Thursday at 8.00pm

Contact: **Richard Finlow 07914119052**

- **Pilates**
Friday at 11am

Contact: **Alison ajpickering@outlook.com**

Further details about what's on in Romsley can be found at -
<http://www.romsley.weebly.com>

OTHER VENUES

- **Mobile Library Service**

First Tuesday of every month.
11.05 – 11.20 – Yew Tree Place
11.25 – 11.40 – Dark Lane
11.45 – 12.05 – Hillcrest Road

- **Sidemoor Mobile Chip Van**
Every Friday in the playing field car park
4.30 - 7.30 pm.

Roles of the Parish Council

Parish Councils are made up of volunteers and have a variety of powers and duties, all of which impact directly on the community. They are the first and most local tier of Government. Romsley is one of nineteen Parish Councils within Bromsgrove District Council.

The Parish Council has a role in consultation with Bromsgrove District Council and Worcestershire County Council in certain areas and the opportunity to influence those bodies for the benefit of the parish. It is funded through Bromsgrove District Council by the `precept` which is part of the Council Tax. The Parish Council is accountable to external audits for monies spent. All councillors follow the Council Code of Conduct, and the Parish Council follows rules, regulations and procedures laid down – ultimately by Central Government.

In certain areas of activity, the Parish Council may act alone. However, this must be under the Local Government Act 1972 and within the legal powers imposed by Acts of Parliament.

The following are all under the remit of local councils. The list below is not exhaustive and is pertinent to Romsley parish:

- Allotments
- Bus Shelters
- Bye-laws – the power to make bye-laws concerning baths and washhouses (swimming pools), cycle parks, mortuaries, and pleasure grounds
- Community Centres, Conference Centres, Halls, Public Buildings
- Drainage – of ditches and ponds
- Entertainment and the Arts
- Footpaths
- General Spending – parish councils can spend a limited amount of money on anything they deem of benefit to the community that is not covered by the other specific responsibilities described in this list
- Gifts – parish councils may accept gifts
- Highways – lighting, parking places, right to enter discussions about new roads and road widening, consent of parish council required for diversion or discontinuation of highway, traffic signs and other notices, tree planting and verge maintenance
- Land – acquisition and sale of
- Legal proceedings – the power to prosecute and defend any legal proceedings in the interests of the community, power to take part in any public enquiry
- Litter – provision of litter bins and support for any anti-litter campaigns
- Planning – parish councils must be notified of, and display for residents, any planning applications for the area.
- Any comments submitted to the planning authority by the parish council must be considered
- Postal and Telecommunication Facilities – the power to pay a public telecommunications operator any loss sustained in providing services in that area
- Recreation – provision of recreation grounds, public walkways, pleasure grounds, open spaces, village greens, gymnasiums, playing fields, holiday camps and boating ponds
- Rights of Way – footpath and bridleway maintenance
- Seats (public)
- Signs – danger signs, place names and bus stops signs
- Tourism – financial contributions to any local tourist organisations allowed
- Traffic Calming
- War Memorials

Water Supply – the power to utilise stream, well or spring water and to provide facilities for general use

Meet your Parish Council



Shaun Bolar — Chairman

I have lived in Dark Lane for 28 years and have been a councillor for the past eight years. I am passionate about walking especially in the local area. We are very lucky to have a number of scenic walks around the village and I am keen to help keep them in good order. I am a member of the Events group taking a particular interest in the musical content of Romstock.



Lesley Gray — Vice Chairman

I have lived in Romsley for 37 and have been a councillor for eight years. I am a member of the Panto group, providing the sound effects and lighting for the performances. I enjoy cycling around the village and the surrounding areas on my electric bike. I play in tennis teams for a local club and enjoy gardening. I am a member of the Events group and help to organise Romstock and St Kenelm's Day. I help to maintain the two planters at the bottom of Dark Lane.



Ray Carr — Councillor

I moved to Romsley in 2014, a month before our twin boys were born. We consider our children very fortunate to grow up in Romsley, and actively support St. Kenelm's School where they attend. We also help support Romsley Scouts and really appreciate the great work the Scouts and Guides do for the children of the village. It was appreciation of village life that led me to join the Parish Council in 2021, becoming a member of the communication and Romstock committees. I am also a keen supporter of grassroots football, acting as the Respect Officer for Halesowen Town Colts Football Club.



John Shaw — Councillor

'Merseysider' by birth, I moved to Romsley 2000. I am a retired Mechanical Cutting Tool engineer in the Automotive industry. I worked in various countries including UK/Sweden/Japan/Italy, three years. I played Rugby for many years and am now a Director at Stourbridge RFC. I am a member of National Trust, Worcestershire Wildlife Trust and RSPB. Worked with Openreach/DCMS bringing Romsley Fibre to nearly 200 residential & business premises. I am the PC 'overseer' at Winwood Heath Allotments, maintaining close liaison with allotment holders.



Jack Strain — Councillor

I joined the parish council initially after involvement with the Romsley Fibre project. I felt that this would allow me to make an even more positive impact to help the village and local community. Having lived in the village all my life, I find it incredibly rewarding to give back in this way. Being a parish councillor also allows me to have a direct impact on issues that matter to residents of the village. It's also a great opportunity to work collaboratively with other dedicated individuals, share ideas and bring positive change to all aspects of Romsley.



Lois Swift — Councillor

I have lived in Romsley for 25 years with my husband and pet alpacas. I am a keen walker and enjoy a jaunt up the Waseleys with my whippets. As a Grandma I love being amongst children, I know St Kenelm's School well and have served as a Governor there. As a member of Romsley Pantomime Group I have responsibility for ticket sales. I enjoy sewing and I repair used school uniform and make hospital gowns for charities. As a Parish Councillor I'm part of the communication group and I'm working on the Playground Refurbishment, an exciting project for 2023!



John Weston — Councillor

As Parish Councillor since January 2022, I am now leading the park play area renewal project working closely with Lois Swift. I have also been reviewing the parish noticeboards and proposals have been accepted by the council that will improve both the information provided and appearance of the noticeboards, including a replacement. I live on Winston Drive, am married with three grown up children and two young granddaughters. Until fairly recently I was a qualified football referee having officiated for 15 years in both adult and youth games reaching Senior County level. I enjoy walking, swimming and travel.

Ed Shepherd — Lengthsman

Ed is our Lengthsman responsible for cleaning highway signage / clearance of obstructing vegetation / minor drainage.



Nigel Williamson — Maintenance

Nigel is a lifelong resident of Romsley and takes great pride in the village. He is responsible for keeping the park in such an immaculate condition and other maintenance activities across our Parish.



Ruth Mullett — Parish Clerk

Ruth is a highly qualified Parish Clerk. She brings a wealth of experience and local knowledge serving Romsley and Hunnington Parish Councils.



Ruth Mullett - Clerk to the Council

167 Bromsgrove Rd, Hunnington, West Midlands. B62 0JU Tel: 07970 976915

Email: romsleyparish@btinternet.com